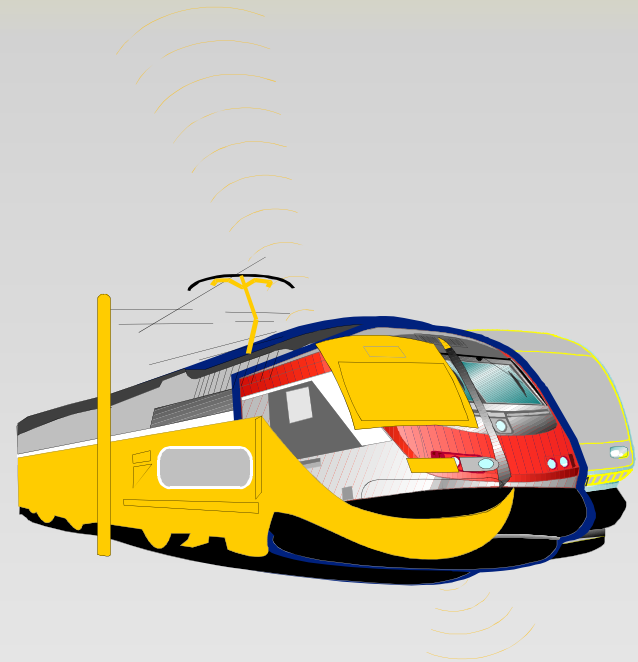


CENSO ANUAL DE PASAJEROS

18 de Setiembre de 2013



**SUBTERRANEOS
de Buenos Aires**

Fuentes de datos:

PASAJEROS QUE BAJAN Y POR SENTIDO

Censo Línea A: 5/12/2013
Censo Línea B: 12/12/2013
Censo Línea C: 3/12/2013
Censo Línea D: 4/12/2013
Censo Línea E: 9/12/2013
Censo Línea H: 11/12/2013

PASAJEROS QUE COMBINAN, censos de:

Combinación Lima-Av. De Mayo 11/12/2013
Combinación Bolivar-Catedral-Perú 11/12/2013
Combinación 9 de Julio-C. Pellegrini-Diagonal Norte 10/12/2013
Combinación Humberto 1°-Jujuy 11/12/2013
Combinación Once-Plaza Miserere 11/12/2013
Combinación Corrientes-Pueyrredón B 10/12/2013
Combinación Independencia Líneas E y C 10/12/2013
Combinación E-PM 9/12/2013

PASAJEROS INGRESANTES POR MOLINETES

Dato de sistemas BI.-

PASAJEROS EN TRÁNSITO

Matriz Origen-Destino Año 1995.-

DÍA HÁBIL – 18 de setiembre de 2013

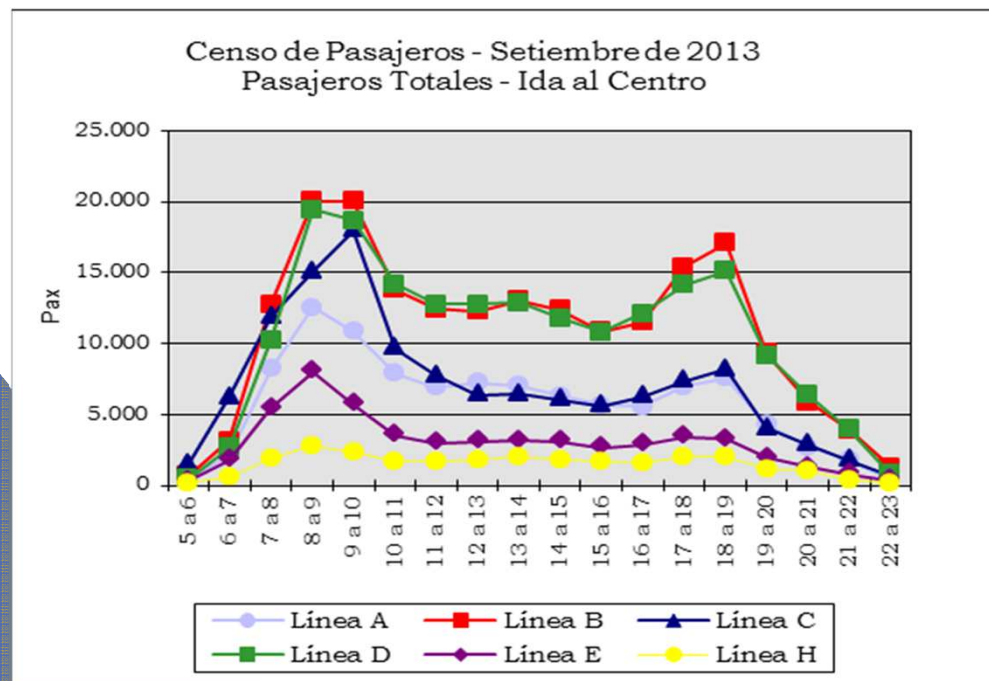
PASAJEROS TOTALES

LINEAS	Pasajeros Pagos x Molinete	Pasajeros Gratis x Molinete	Pasajeros por Molinete	COMBINACIONES LIBRES X ORIGEN - DESTINO				Pasajeros Totales	%
				DIRECTAS	TRANSITOS	PREMETRO	TOTAL		
A	151.791	9.217	161.008	33.792			33.792	194.800	13,97%
B	309.895	14.195	324.090	58.064			58.064	382.154	27,41%
C	163.228	8.825	172.053	74.962	12.510		87.472	259.525	18,61%
D	293.028	12.470	305.498	83.434	2.423		85.857	391.355	28,07%
E	69.029	4.523	73.552	31.954		3.361	35.315	108.867	7,81%
H	25.596	1.973	27.569	30.059			30.059	57.628	4,13%
TOTAL	1.012.568	51.203	1.063.771	312.265	14.933	3.361	330.559	1.394.330	100,00%
%	72,62%	3,67%	76,29%	22,40%	1,07%	0,24%	23,71%	100,00%	

	% Combinaciones sobre Pagos	% Combinaciones sobre Totales	% Totales sobre Pagos
A	22,26%	17,35%	28,33%
B	18,74%	15,19%	23,32%
C	53,59%	33,70%	59,00%
D	29,30%	21,94%	33,56%
E	51,16%	32,44%	57,71%
H	117,44%	52,16%	125,14%
TOTAL	32,65%	23,71%	37,70%

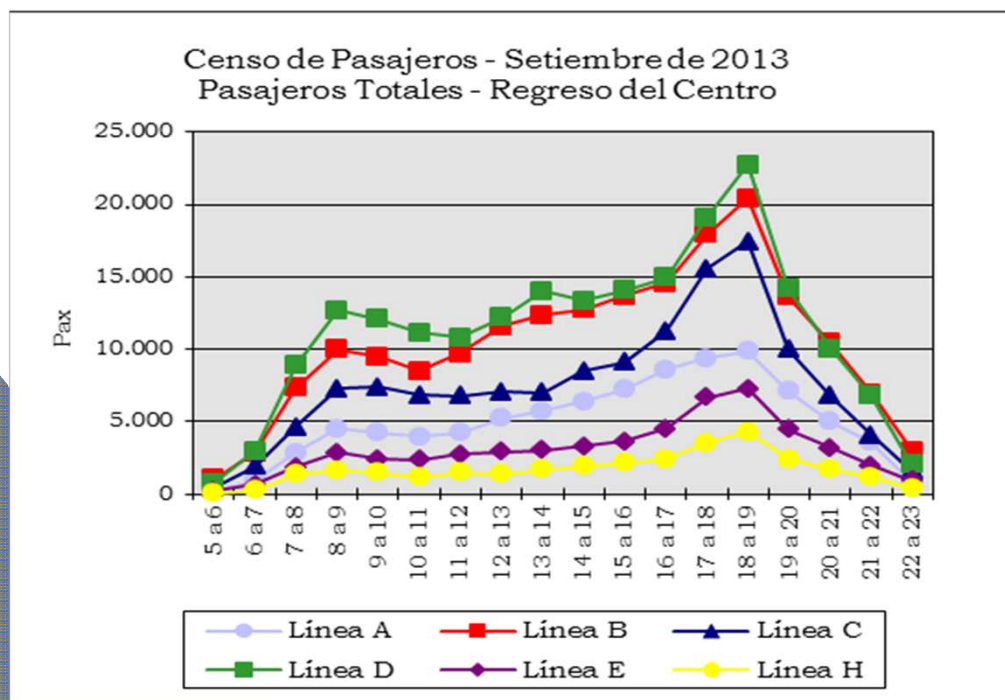
Composición de los pasajeros totales por hora IDA AL CENTRO

Línea	5 a 6	6 a 7	7 a 8	8 a 9	9 a 10	10 a 11	11 a 12	12 a 13	13 a 14	14 a 15	15 a 16	16 a 17	17 a 18	18 a 19	19 a 20	20 a 21	21 a 22	22 a 23	TOTAL	%
A	522	2.130	8.266	12.568	10.882	7.914	6.908	7.250	7.042	6.339	5.666	5.557	6.958	7.583	4.331	2.720	1.767	403	104.807	15,05%
B	684	3.133	12.804	20.047	20.040	13.808	12.470	12.279	13.056	12.400	10.857	11.512	15.394	17.070	9.362	5.905	3.906	1.294	196.020	28,15%
C	1.532	6.235	11.910	15.062	17.977	9.670	7.754	6.395	6.426	6.052	5.621	6.267	7.375	8.202	4.036	2.901	1.803	675	125.891	18,08%
D	490	2.685	10.244	19.432	18.686	14.204	12.799	12.753	12.914	11.789	10.821	12.149	14.153	15.110	9.186	6.394	3.986	819	188.616	27,09%
E	344	1.814	5.439	8.014	5.726	3.543	3.017	3.083	3.152	3.123	2.652	2.875	3.422	3.253	1.935	1.325	823	356	53.897	7,74%
H	135	564	1.910	2.792	2.358	1.710	1.660	1.875	1.993	1.861	1.721	1.656	2.022	2.025	1.177	1.045	448	162	27.112	3,89%
TOTAL	3.707	16.560	50.572	77.914	75.669	50.849	44.608	43.635	44.582	41.564	37.337	40.016	49.324	53.243	30.028	20.291	12.732	3.709	696.343	100,00%
%	0,53%	2,38%	7,26%	11,19%	10,87%	7,30%	6,41%	6,27%	6,40%	5,97%	5,36%	5,75%	7,08%	7,65%	4,31%	2,91%	1,83%	0,53%	100,00%	



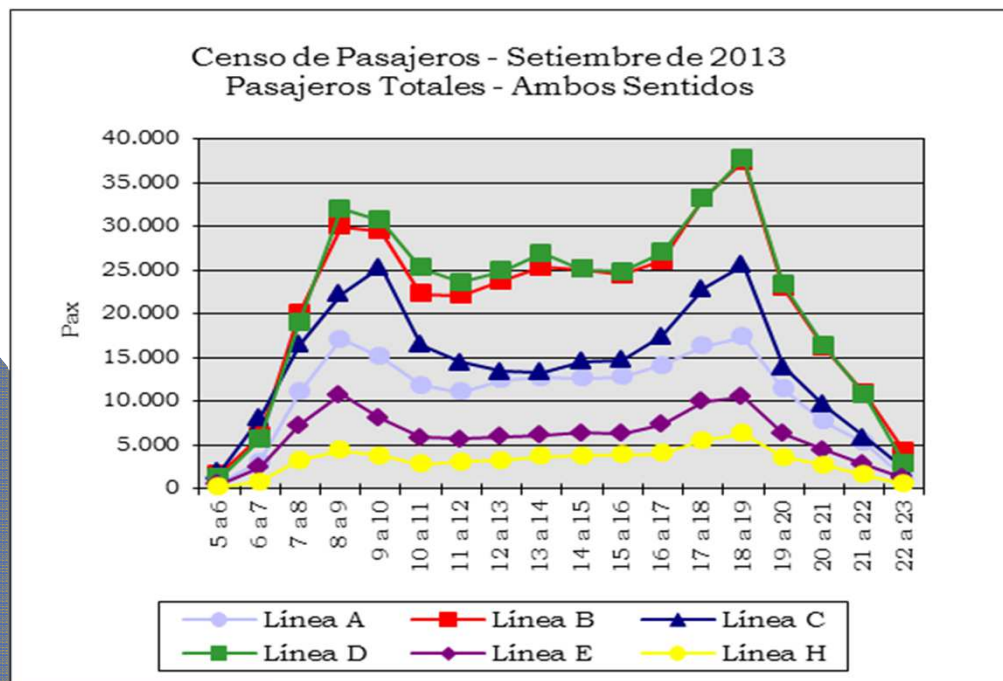
Composición de los pasajeros totales por hora REGRESO DEL CENTRO

Línea	5 a 6	6 a 7	7 a 8	8 a 9	9 a 10	10 a 11	11 a 12	12 a 13	13 a 14	14 a 15	15 a 16	16 a 17	17 a 18	18 a 19	19 a 20	20 a 21	21 a 22	22 a 23	TOTAL	%
A	258	940	2.839	4.541	4.248	3.948	4.216	5.231	5.745	6.374	7.228	8.628	9.396	9.860	7.139	5.004	3.568	828	89.993	12,89%
B	1.041	2.891	7.310	10.010	9.483	8.478	9.697	11.567	12.365	12.749	13.684	14.558	17.927	20.417	13.620	10.408	6.976	2.956	186.135	26,67%
C	439	1.920	4.639	7.275	7.402	6.858	6.758	7.042	6.992	8.509	9.117	11.254	15.580	17.457	9.985	6.765	4.074	1.568	133.634	19,15%
D	772	2.946	8.870	12.662	12.076	11.121	10.806	12.176	14.016	13.353	14.084	14.949	19.072	22.755	14.180	10.057	6.798	2.046	202.739	29,05%
E	213	644	1.863	2.836	2.425	2.359	2.739	2.914	3.031	3.280	3.663	4.515	6.649	7.276	4.461	3.196	1.991	915	54.970	7,88%
H	73	290	1.356	1.632	1.462	1.135	1.461	1.393	1.696	1.922	2.150	2.405	3.513	4.300	2.434	1.715	1.207	372	30.515	4,37%
TOTAL	2.796	9.632	26.877	38.956	37.097	33.899	35.676	40.323	43.845	46.187	49.926	56.310	72.138	82.065	51.819	37.145	24.613	8.685	697.987	100,00%
%	0,40%	1,38%	3,85%	5,58%	5,31%	4,86%	5,11%	5,78%	6,28%	6,62%	7,15%	8,07%	10,34%	11,76%	7,42%	5,32%	3,53%	1,24%	100,00%	



Composición de los pasajeros totales por hora AMBOS SENTIDOS

Línea	5 a 6	6 a 7	7 a 8	8 a 9	9 a 10	10 a 11	11 a 12	12 a 13	13 a 14	14 a 15	15 a 16	16 a 17	17 a 18	18 a 19	19 a 20	20 a 21	21 a 22	22 a 23	TOTAL	%
A	781	3.070	11.105	17.109	15.131	11.862	11.124	12.481	12.787	12.714	12.893	14.185	16.354	17.442	11.470	7.725	5.335	1.232	194.800	13,97%
B	1.725	6.024	20.114	30.057	29.523	22.285	22.166	23.846	25.421	25.149	24.541	26.070	33.322	37.487	22.982	16.313	10.881	4.249	382.154	27,41%
C	1.970	8.155	16.549	22.337	25.379	16.528	14.512	13.437	13.417	14.561	14.738	17.521	22.955	25.660	14.021	9.666	5.877	2.243	259.525	18,61%
D	1.262	5.631	19.115	32.094	30.762	25.325	23.605	24.929	26.930	25.142	24.905	27.098	33.225	37.866	23.366	16.451	10.784	2.865	391.355	28,07%
E	557	2.458	7.302	10.850	8.151	5.902	5.757	5.997	6.183	6.403	6.315	7.391	10.071	10.529	6.396	4.521	2.814	1.271	108.867	7,81%
H	207	854	3.265	4.424	3.820	2.845	3.121	3.268	3.689	3.782	3.871	4.061	5.535	6.325	3.611	2.760	1.655	534	57.628	4,13%
TOTAL	6.503	26.192	77.449	116.870	112.766	84.747	80.284	83.958	88.428	87.751	87.263	96.326	121.462	135.309	81.847	57.436	37.346	12.394	1.394.330	100,00%
%	0,47%	1,88%	5,55%	8,38%	8,09%	6,08%	5,76%	6,02%	6,34%	6,29%	6,26%	6,91%	8,71%	9,70%	5,87%	4,12%	2,68%	0,89%	100,00%	



DÍA HÁBIL – 18 de setiembre de 2013
ORIGEN Y DESTINO DE VIAJES POR LÍNEA

LINEAS ORIGEN	A	B	C	D	E	H	TOTAL
A	129.382	1.760	17.683	6.022	640	5.520	161.008
B	6.378	239.896	32.251	23.983	4.028	17.555	324.090
C	21.034	21.766	76.909	39.920	12.424	0	172.053
D	6.276	21.547	25.974	244.173	7.529	0	305.498
E	1.985	2.252	11.121	10.933	40.586	6.674	73.552
H	5.846	13.539	0	0	6.184	1.999	27.569
TOTAL	170.901	300.761	163.939	325.030	71.391	31.749	1.063.771

	A	B	C	D	E	H	Total
Directos	129.382	239.896	76.909	244.173	40.586	1.999	732.946
Destinados a otras Líneas	31.626	84.195	95.144	61.325	32.966	25.570	330.825
Subtotal Pg+Fr	161.008	324.090	172.053	305.498	73.552	27.569	1.063.771
Recibidos de otras Líneas	33.792	58.064	74.962	83.434	31.954	30.059	312.265
Subtotal	194.800	382.154	247.015	388.932	105.506	57.628	1.376.036
Tránsito			12.510	2.423			14.933
Pm a Línea E					3.361		3.361
TOTAL	194.800	382.154	259.525	391.355	108.867	57.628	1.394.330

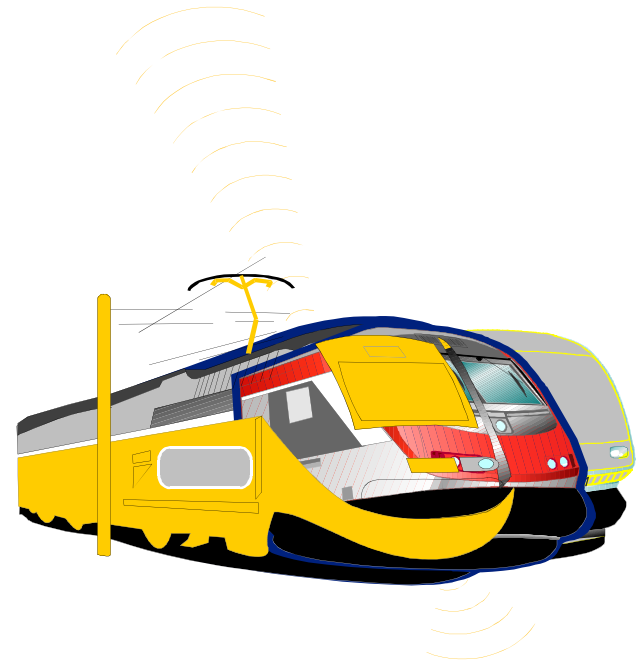
DÍA HÁBIL – 18 de setiembre de 2013
COMPARATIVO DE ESTACIONES DE COMBINACIÓN

Sentido: al Centro						
Estación	2013			1995		
	Pasajeros Totales	Total por Sentido	%	Pasajeros Totales	Total por Sentido	%
MIS	13.625	104.807	13,00%	17.072	103.472	16,50%
LIM	7.353	104.807	7,02%	6.549	103.472	6,33%
PER	3.874	104.807	3,70%	2.717	103.472	2,63%
CPE	15.793	196.020	8,06%	4.866	134.050	3,63%
PUB	12.948	196.020	6,61%	N/D	N/D	N/D
INC	13.829	125.891	10,98%	15.236	121.585	12,53%
AVM	12.678	125.891	10,07%	13.581	121.585	11,17%
DNO	10.249	125.891	8,14%	12.600	121.585	10,36%
9DJ	10.241	188.616	5,43%	6.140	109.534	5,61%
CAT	0	188.616	0,00%	0	109.534	0,00%
INE	5.919	53.897	10,98%	2.702	41.882	6,45%
JUJ	5.504	53.897	10,21%	2.168	41.882	5,18%
BOL	0	53.897	0,00%	0	41.882	0,00%
VIR	14.419	53.897	26,75%	9.945	41.882	23,75%
ONC	4.832	27.112	17,82%	N/D	N/D	N/D
HUM	6.888	27.112	25,41%	N/D	N/D	N/D
COR	0	27.112	0,00%	N/D	N/D	N/D

Sentido: del Centro						
Estación	2013			1995		
	Pasajeros Totales	Total por Sentido	%	Pasajeros Totales	Total por Sentido	%
MIS	4.838	89.993	5,38%	3.995	101.352	3,94%
LIM	22.620	89.993	25,14%	31.784	101.352	31,36%
PER	15.908	89.993	17,68%	18.436	101.352	18,19%
CPE	54.226	186.135	29,13%	44.228	132.327	33,42%
PUB	16.464	186.135	8,85%	N/D	N/D	N/D
INC	3.922	133.634	2,93%	3.722	117.543	3,17%
AVM	13.492	133.634	10,10%	12.393	117.543	10,54%
DNO	48.949	133.634	36,63%	45.697	117.543	38,88%
9DJ	71.944	202.739	35,49%	34.737	104.831	33,14%
CAT	61.262	202.739	30,22%	39.825	104.831	37,99%
INE	16.194	54.970	29,46%	17.399	46.418	37,48%
JUJ	4.082	54.970	7,43%	880	46.418	1,90%
BOL	24.343	54.970	44,28%	19.922	46.418	42,92%
VIR	0	54.970	0,00%	0	46.418	0,00%
ONC	5.599	30.515	18,35%	N/D	N/D	N/D
HUM	2.373	30.515	7,77%	N/D	N/D	N/D
COR	21.558	30.515	70,65%	N/D	N/D	N/D

Sentido: Ambos						
Estación	2013			1995		
	Pasajeros Totales	Total por Sentido	%	Pasajeros Totales	Total por Sentido	%
MIS	18.463	194.800	9,48%	21.067	204.824	10,29%
LIM	29.973	194.800	15,39%	38.333	204.824	18,72%
PER	19.782	194.800	10,15%	21.153	204.824	10,33%
CPE	70.019	382.154	18,32%	49.094	266.377	18,43%
PUB	29.413	382.154	7,70%	N/D	N/D	N/D
INC	17.751	259.525	6,84%	18.958	239.128	7,93%
AVM	26.170	259.525	10,08%	25.974	239.128	10,86%
DNO	59.197	259.525	22,81%	58.297	239.128	24,38%
9DJ	82.184	391.355	21,00%	40.877	214.365	19,07%
CAT	61.262	391.355	15,65%	39.825	214.365	18,58%
INE	22.113	108.867	20,31%	20.101	88.300	22,76%
JUJ	9.586	108.867	8,80%	3.048	88.300	3,45%
BOL	24.343	108.867	22,36%	19.922	88.300	22,56%
VIR	14.419	108.867	13,24%	9.945	88.300	11,26%
ONC	10.431	57.628	18,10%	N/D	N/D	N/D
HUM	9.261	57.628	16,07%	N/D	N/D	N/D
COR	21.558	57.628	37,41%	N/D	N/D	N/D

DETALLE POR LÍNEA



LÍNEA A



COMPOSICIÓN DE PASAJEROS POR ESTACIÓN

ESTACION	Sentido: a Plaza de Mayo				Sentido: a Carabobo				Sentido: Ambos				
	Directos	Franquiados + Pases pagos	Comb	Totales	Directos	Franquiados + Pases pagos	Comb	Totales	Directos	Franquiados + Pases pagos	Comb	Totales	%
CAR	24.676	951		25.627	0	0		0	24.676	951		25.627	13,16%
PUA	5.066	223		5.289	711	27		738	5.777	250		6.027	3,09%
PJU	7.955	471		8.427	2.988	159		3.146	10.943	630		11.573	5,94%
ACO	11.898	690		12.588	767	94		861	12.665	784		13.449	6,90%
RDJ	5.403	439		5.842	1.214	125		1.339	6.617	564		7.181	3,69%
CBR	5.666	375		6.041	1.780	189		1.969	7.446	564		8.010	4,11%
LOR	3.801	418		4.219	280	203		483	4.081	621		4.702	2,41%
MIS	11.366	699	1.560	13.625	2.151	263	2.424	4.838	13.517	962	3.984	18.463	9,48%
PAS	3.210	262		3.472	0	0		0	3.210	262		3.472	1,78%
ALB	0	0		0	2.909	249		3.158	2.909	249		3.158	1,62%
CNG	3.777	203		3.980	7.463	482		7.945	11.240	685		11.925	6,12%
SPE	2.902	182		3.084	5.411	296		5.707	8.313	478		8.791	4,51%
LIM	2.446	175	4.732	7.353	6.014	386	16.220	22.620	8.460	561	20.952	29.973	15,39%
PIE	1.314	72		1.386	6.306	347		6.653	7.620	419		8.039	4,13%
PER	2.249	88	1.537	3.874	8.149	439	7.320	15.908	10.398	527	8.857	19.782	10,15%
PMA	0	0		0	13.919	710		14.629	13.919	710		14.629	7,51%
TOTAL	91.730	5.249	7.829	104.807	60.062	3.968	25.963	89.993	151.791	9.217	33.792	194.800	100,00%
%	47,09%	2,69%	4,02%	53,80%	30,83%	2,04%	13,33%	46,20%	77,92%	4,73%	17,35%	100,00%	

COMPOSICIÓN DE PASAJEROS POR BANDA HORARIA

HORA	Sentido: a Plaza de Mayo				Sentido: a Carabobo				Sentido: Ambos				
	Directos	Franquiados + Pases pagos	Comb	Totales	Directos	Franquiados + Pases pagos	Comb	Totales	Directos	Franquiados + Pases pagos	Comb	Totales	%
5 a 6	442	45	35	522	66	22	170	258	508	67	206	781	0,40%
6 a 7	1.885	122	123	2.130	402	32	506	940	2.287	154	629	3.070	1,58%
7 a 8	7.516	367	383	8.266	1.381	96	1.362	2.839	8.897	464	1.744	11.105	5,70%
8 a 9	11.745	330	494	12.568	2.243	119	2.178	4.541	13.988	449	2.672	17.109	8,78%
9 a 10	10.147	268	467	10.882	2.035	150	2.063	4.248	12.182	419	2.530	15.131	7,77%
10 a 11	6.853	507	554	7.914	2.213	282	1.453	3.948	9.066	788	2.007	11.862	6,09%
11 a 12	5.780	509	619	6.908	2.673	349	1.194	4.216	8.453	858	1.814	11.124	5,71%
12 a 13	6.141	569	540	7.250	3.453	399	1.380	5.231	9.594	967	1.920	12.481	6,41%
13 a 14	5.960	521	561	7.042	3.819	408	1.517	5.745	9.780	928	2.079	12.787	6,56%
14 a 15	5.281	455	604	6.339	4.349	367	1.658	6.374	9.630	822	2.262	12.714	6,53%
15 a 16	4.641	430	594	5.666	5.138	380	1.709	7.228	9.779	811	2.303	12.893	6,62%
16 a 17	4.791	228	538	5.557	6.408	261	1.959	8.628	11.200	489	2.497	14.185	7,28%
17 a 18	6.152	220	586	6.958	6.604	281	2.511	9.396	12.756	501	3.097	16.354	8,40%
18 a 19	6.496	264	823	7.583	7.095	254	2.511	9.860	13.591	518	3.333	17.442	8,95%
19 a 20	3.745	160	426	4.331	5.240	179	1.720	7.139	8.985	339	2.146	11.470	5,89%
20 a 21	2.319	108	293	2.720	3.709	153	1.142	5.004	6.028	261	1.435	7.725	3,97%
21 a 22	1.466	122	179	1.767	2.497	165	906	3.568	3.963	287	1.085	5.335	2,74%
22 a 23	370	24	10	403	736	70	23	828	1.105	94	32	1.232	0,63%
TOTAL	91.730	5.249	7.829	104.807	60.062	3.968	25.963	89.993	151.791	9.217	33.792	194.800	100,00%
%	47,09%	2,69%	4,02%	53,80%	30,83%	2,04%	13,33%	46,20%	77,92%	4,73%	17,35%	100,00%	

PASAJEROS TOTALES
SENTIDO: PLAZA DE MAYO

<i>Sentido: a Plaza de Mayo</i>																		
HORA	CAR	PUA	PJU	ACO	RDJ	CBR	LOR	MIS	PAS	ALB	CNG	SPE	LIM	PIE	PER	PMA	TOTAL	%
5 a 6	111	17	49	54	7	21	18	201	4	0	6	4	22	1	7	0	522	0,50%
6 a 7	735	99	160	255	82	76	78	457	36	0	22	10	93	3	24	0	2.130	2,03%
7 a 8	3.273	551	785	1.120	510	466	247	710	97	0	83	46	283	11	84	0	8.266	7,89%
8 a 9	4.701	914	1.310	1.635	739	667	411	1.349	135	0	149	90	364	7	98	0	12.568	11,99%
9 a 10	3.718	631	1.203	1.312	549	539	370	1.547	181	0	201	164	360	9	98	0	10.882	10,38%
10 a 11	2.034	398	658	1.059	416	476	337	1.200	249	0	272	209	475	18	113	0	7.914	7,55%
11 a 12	1.479	293	571	805	367	397	336	1.103	284	0	285	258	550	36	144	0	6.908	6,59%
12 a 13	1.429	337	594	944	363	454	359	1.158	336	0	336	241	529	37	133	0	7.250	6,92%
13 a 14	1.404	325	601	890	411	373	354	1.038	311	0	365	270	519	48	133	0	7.042	6,72%
14 a 15	1.157	248	390	740	393	382	322	891	315	0	392	280	559	67	204	0	6.339	6,05%
15 a 16	938	246	400	599	313	334	282	748	263	0	334	229	581	102	297	0	5.666	5,41%
16 a 17	954	223	364	616	334	381	248	633	245	0	264	245	559	128	363	0	5.557	5,30%
17 a 18	1.261	285	415	756	297	405	222	781	285	0	352	286	651	269	694	0	6.958	6,64%
18 a 19	1.056	303	361	636	417	375	257	863	288	0	373	386	898	461	909	0	7.583	7,24%
19 a 20	679	169	256	503	292	277	148	468	189	0	264	146	391	145	404	0	4.331	4,13%
20 a 21	438	116	188	381	179	203	112	288	156	0	161	73	273	29	123	0	2.720	2,60%
21 a 22	201	129	99	223	135	159	108	151	78	0	101	137	190	10	46	0	1.767	1,69%
22 a 23	59	6	24	60	38	56	10	38	20	0	20	10	56	5	2	0	403	0,38%
Total	25.627	5.289	8.427	12.588	5.842	6.041	4.219	13.625	3.472	0	3.980	3.084	7.353	1.386	3.874	0	104.807	100,00%
%	24,45%	5,05%	8,04%	12,01%	5,57%	5,76%	4,03%	13,00%	3,31%	0,00%	3,80%	2,94%	7,02%	1,32%	3,70%	0,00%	70,50%	

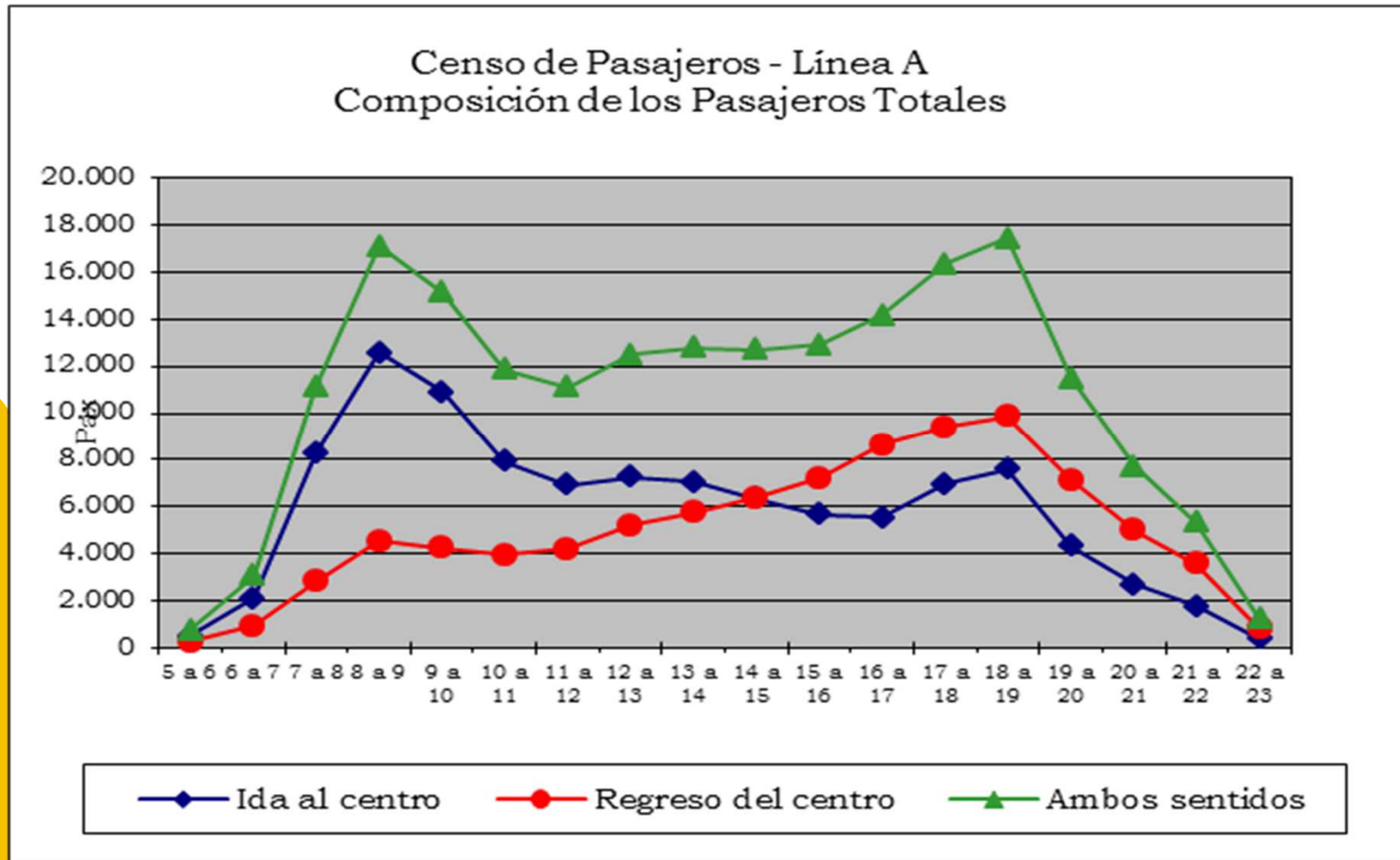
PASAJEROS TOTALES
SENTIDO: CARABOBO

<i>Sentido: a Carabobo</i>																		
HORA	CAR	PUA	PJU	ACO	RDJ	CBR	LOR	MIS	PAS	ALB	CNG	SPE	LIM	PIE	PER	PMA	TOTAL	%
5 a 6	0	0	14	0	1	2	1	21	0	4	9	13	121	5	52	15	258	0,29%
6 a 7	0	4	97	4	14	14	2	89	0	16	37	28	381	18	152	84	940	1,04%
7 a 8	0	44	354	28	37	67	11	213	0	73	152	97	1.030	46	401	286	2.839	3,15%
8 a 9	0	102	695	58	53	67	19	316	0	82	198	128	1.598	75	645	504	4.541	5,05%
9 a 10	0	47	373	50	56	76	15	335	0	99	208	157	1.540	101	637	555	4.248	4,72%
10 a 11	0	23	323	42	49	93	27	249	0	117	350	206	1.206	192	519	553	3.948	4,39%
11 a 12	0	39	189	45	72	94	36	248	0	149	409	343	1.078	265	546	703	4.216	4,68%
12 a 13	0	19	75	85	103	130	37	298	0	250	554	355	1.251	368	723	983	5.231	5,81%
13 a 14	0	29	80	48	103	155	49	293	0	225	544	419	1.370	416	829	1.186	5.745	6,38%
14 a 15	0	24	163	57	112	131	34	324	0	242	614	467	1.521	505	911	1.269	6.374	7,08%
15 a 16	0	21	105	64	96	160	31	340	0	287	678	483	1.622	648	1.225	1.468	7.228	8,03%
16 a 17	0	55	117	72	155	194	43	387	0	337	758	594	1.810	716	1.597	1.793	8.628	9,59%
17 a 18	0	80	163	66	137	187	54	461	0	276	735	586	2.215	891	1.962	1.582	9.396	10,44%
18 a 19	0	44	196	107	125	203	55	520	0	300	789	584	2.348	945	1.956	1.687	9.860	10,96%
19 a 20	0	84	118	72	86	176	20	373	0	247	691	523	1.590	596	1.617	947	7.139	7,93%
20 a 21	0	19	58	45	87	116	21	211	0	260	621	315	1.053	418	1.249	532	5.004	5,56%
21 a 22	0	87	14	14	46	77	21	140	0	150	449	324	778	333	770	366	3.568	3,97%
22 a 23	0	17	11	4	7	27	7	21	0	44	149	85	107	115	118	116	828	0,92%
Total	0	738	3.146	861	1.339	1.969	483	4.838	0	3.158	7.945	5.707	22.620	6.653	15.908	14.629	89.993	100,00%
%	0,00%	0,82%	3,50%	0,96%	1,49%	2,19%	0,54%	5,38%	0,00%	3,51%	8,83%	6,34%	25,14%	7,39%	17,68%	16,26%	99,18%	

PASAJEROS TOTALES
AMBOS SENTIDOS

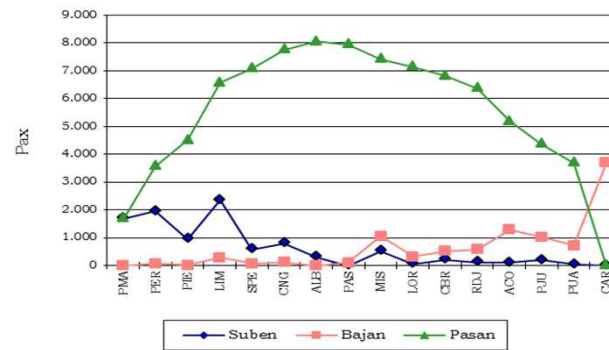
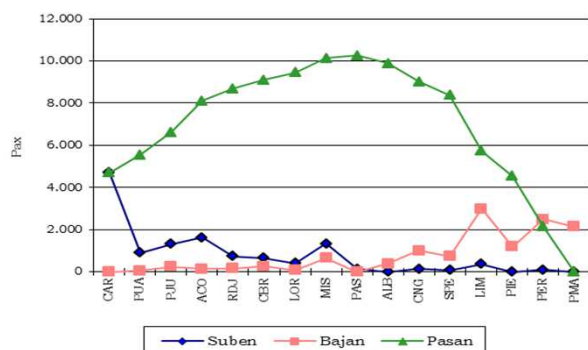
<i>Ambos sentidos</i>																		
HORA	CAR	PUA	PJU	ACO	RDJ	CBR	LOR	MIS	PAS	ALB	CNG	SPE	LIM	PIE	PER	PMA	TOTAL	%
5 a 6	111	17	63	54	8	23	19	222	4	4	15	17	144	6	59	15	781	0,40%
6 a 7	735	103	257	259	96	90	80	546	36	16	59	38	474	21	176	84	3.070	1,58%
7 a 8	3.273	595	1.139	1.148	547	533	258	923	97	73	235	143	1.313	57	485	286	11.105	5,70%
8 a 9	4.701	1.016	2.005	1.693	792	734	430	1.666	135	82	347	218	1.961	82	743	504	17.109	8,78%
9 a 10	3.718	678	1.576	1.362	605	615	385	1.882	181	99	409	321	1.901	110	734	555	15.131	7,77%
10 a 11	2.034	421	981	1.101	465	569	364	1.449	249	117	622	415	1.680	210	631	553	11.862	6,09%
11 a 12	1.479	332	760	850	439	491	372	1.352	284	149	694	601	1.628	301	689	703	11.124	5,71%
12 a 13	1.429	356	669	1.029	466	584	396	1.455	336	250	890	596	1.780	405	856	983	12.481	6,41%
13 a 14	1.404	354	681	938	514	528	403	1.330	311	225	909	689	1.888	464	962	1.186	12.787	6,56%
14 a 15	1.157	272	553	797	505	513	356	1.215	315	242	1.006	747	2.079	572	1.115	1.269	12.714	6,53%
15 a 16	938	267	505	663	409	494	313	1.088	263	287	1.012	712	2.203	750	1.521	1.468	12.893	6,62%
16 a 17	954	278	481	688	489	575	291	1.020	245	337	1.022	839	2.370	844	1.960	1.793	14.185	7,28%
17 a 18	1.261	365	578	822	434	592	276	1.242	285	276	1.087	872	2.866	1.160	2.656	1.582	16.354	8,40%
18 a 19	1.056	347	557	743	542	578	312	1.383	288	300	1.162	970	3.246	1.406	2.865	1.687	17.442	8,95%
19 a 20	679	253	374	575	378	453	168	840	189	247	955	669	1.981	741	2.021	947	11.470	5,89%
20 a 21	438	135	246	426	266	319	133	499	156	260	782	388	1.326	447	1.372	532	7.725	3,97%
21 a 22	201	216	113	237	181	236	129	290	78	150	550	461	968	343	816	366	5.335	2,74%
22 a 23	59	22	35	64	45	83	17	59	20	44	169	95	163	120	120	116	1.232	0,63%
Total	25.627	6.027	11.573	13.449	7.181	8.010	4.702	18.463	3.472	3.158	11.925	8.791	29.973	8.039	19.782	14.629	194.800	100,00%
%	13,16%	3,09%	5,94%	6,90%	3,69%	4,11%	2,41%	9,48%	1,78%	1,62%	6,12%	4,51%	15,39%	4,13%	10,15%	7,51%	83,75%	

COMPOSICIÓN DE PASAJEROS TOTALES



COMPOSICIÓN DE PASAJEROS EN HORA PICO

Línea A						De 18 a 19 hs.					
De 8 a 9 hs.											
a P. MAYO	Suben	Bajan	Pasan	Dist. a prox. est.	Dist. total Km	a CARABOBO	Suben	Bajan	Pasan	Dist. a prox. est.	Dist. total Km
Estación						Estación					
CAR	4.701	0	4.701	0,764	3.592	PMA	1.687	0	1.687	0,309	521
PUA	914	56	5.559	0,764	4.247	PER	1.956	77	3.566	0,357	1.273
PJU	1.310	250	6.618	0,560	3.706	PIE	945	5	4.506	0,389	1.753
ACO	1.635	136	8.117	0,700	5.682	LIM	2.348	285	6.569	0,359	2.358
RDJ	739	159	8.697	0,786	6.835	SPE	584	71	7.082	0,557	3.945
CBR	667	259	9.105	0,613	5.581	CNG	789	117	7.754	0,377	2.923
LOR	411	70	9.446	0,891	8.416	ALB	300	0	8.054	0,151	1.216
MIS	1.349	663	10.132	0,740	7.497	PAS	0	106	7.948	0,740	5.882
PAS	135	0	10.267	0,151	1.550	MIS	520	1.059	7.410	0,891	6.602
ALB	0	382	9.884	0,377	3.726	LOR	55	322	7.143	0,613	4.378
CNG	149	1.006	9.028	0,557	5.028	CBR	203	523	6.822	0,786	5.362
SPE	90	744	8.373	0,359	3.006	RDJ	125	580	6.368	0,700	4.457
LIM	364	2.993	5.743	0,389	2.234	ACO	107	1.283	5.192	0,560	2.907
PIE	7	1.205	4.546	0,357	1.623	PJU	196	1.027	4.361	0,764	3.332
PER	98	2.493	2.150	0,309	664	PUA	44	717	3.688	0,764	2.818
PMA	0	2.150	0	0,000	0	CAR	0	3.688	0	0,000	0
Distancia media por pasajero (Km)					5,04	Distancia media por pasajero (Km)					5,04
% sobre longitud de la línea					60,64%	% sobre longitud de la línea					60,64%
Factor de renovación					1,22	Factor de renovación					1,22
STMC HP PAGOS					6,76%	STMC HP PAGOS					5,31%



LÍNEA B



COMPOSICIÓN DE PASAJEROS POR ESTACIÓN

ESTACION	Sentido: a L. N. Alem				Sentido: a J. M. de Rosas				Sentido: Ambos				
	Directos	Franquiados + Pases pagos	Comb	Totales	Directos	Franquiados + Pases pagos	Comb	Totales	Directos	Franquiados + Pases pagos	Comb	Totales	%
ROS	20.293	771		21.064	0	0		0	20.293	771		21.064	5,51%
ECH	5.000	224		5.224	836	25		861	5.836	249		6.085	1,59%
LIN	13.093	651		13.744	1.414	60		1.474	14.507	711		15.218	3,98%
TRO	5.884	278		6.162	522	27		549	6.406	305		6.711	1,76%
LAC	31.506	1.979		33.485	1.031	161		1.192	32.537	2.140		34.677	9,07%
DOR	13.533	578		14.111	845	73		918	14.378	651		15.029	3,93%
MAL	17.766	825		18.591	2.700	219		2.919	20.466	1.044		21.510	5,63%
AGA	11.538	606		12.144	2.999	189		3.188	14.537	795		15.332	4,01%
MED	11.862	596		12.458	5.369	310		5.679	17.231	906		18.137	4,75%
CGA	9.169	406		9.575	5.889	345		6.234	15.058	751		15.809	4,14%
PUB	6.974	285	5.689	12.948	8.626	459	7.379	16.464	15.600	744	13.069	29.413	7,70%
PST	4.253	243		4.496	9.602	543		10.145	13.855	786		14.641	3,83%
CAB	5.109	228		5.337	14.109	701		14.810	19.218	929		20.147	5,27%
URU	4.728	216		4.944	15.900	588		16.488	20.628	804		21.432	5,61%
CPE	8.284	332	7.177	15.793	15.744	664	37.818	54.226	24.028	996	44.995	70.019	18,32%
FLO	5.806	136		5.942	20.181	667		20.848	25.987	803		26.790	7,01%
ALE	0	0		0	29.330	810		30.140	29.330	810		30.140	7,89%
TOTAL	174.798	8.355	12.866	196.020	135.097	5.841	45.197	186.135	309.895	14.195	58.064	382.154	100,00%
%	45,74%	2,19%	3,37%	51,29%	35,35%	1,53%	11,83%	48,71%	81,09%	3,71%	15,19%	100,00%	

COMPOSICIÓN DE PASAJEROS POR BANDA HORARIA

HORA	Sentido: a L. N. Alem				Sentido: a J. M. de Rosas				Sentido: Ambos				
	Directos	Franquiciados + Pases pagos	Comb	Totales	Directos	Franquiciados + Pases pagos	Comb	Totales	Directos	Franquiciados + Pases pagos	Comb	Totales	%
5 a 6	558	63	64	684	332	26	682	1.041	890	89	746	1.725	0,45%
6 a 7	2.764	182	187	3.133	1.246	59	1.586	2.891	4.009	241	1.773	6.024	1,58%
7 a 8	11.684	484	635	12.804	3.800	165	3.345	7.310	15.484	649	3.980	20.114	5,26%
8 a 9	18.417	449	1.181	20.047	5.778	191	4.040	10.010	24.195	640	5.221	30.057	7,87%
9 a 10	18.092	475	1.473	20.040	5.281	161	4.042	9.483	23.372	636	5.515	29.523	7,73%
10 a 11	11.874	831	1.103	13.808	5.238	385	2.854	8.478	17.112	1.216	3.957	22.285	5,83%
11 a 12	10.505	873	1.092	12.470	6.631	520	2.545	9.697	17.136	1.393	3.637	22.166	5,80%
12 a 13	10.522	887	870	12.279	8.240	709	2.618	11.567	18.762	1.596	3.488	23.846	6,24%
13 a 14	11.375	822	859	13.056	9.146	622	2.598	12.365	20.521	1.444	3.457	25.421	6,65%
14 a 15	10.770	746	885	12.400	9.304	608	2.837	12.749	20.073	1.353	3.722	25.149	6,58%
15 a 16	9.414	658	786	10.857	10.227	631	2.826	13.684	19.641	1.288	3.612	24.541	6,42%
16 a 17	10.436	411	665	11.512	11.201	369	2.987	14.558	21.637	780	3.652	26.070	6,82%
17 a 18	14.185	448	761	15.394	14.595	353	2.979	17.927	28.781	801	3.740	33.322	8,72%
18 a 19	15.801	435	834	17.070	16.888	374	3.156	20.417	32.688	809	3.990	37.487	9,81%
19 a 20	8.461	227	674	9.362	11.151	252	2.217	13.620	19.611	479	2.891	22.982	6,01%
20 a 21	5.276	175	454	5.905	8.276	208	1.923	10.408	13.552	384	2.377	16.313	4,27%
21 a 22	3.529	119	258	3.906	5.514	133	1.329	6.976	9.042	252	1.587	10.881	2,85%
22 a 23	1.138	68	88	1.294	2.249	76	631	2.956	3.387	144	718	4.249	1,11%
TOTAL	174.798	8.355	12.866	196.020	135.097	5.841	45.197	186.135	309.895	14.195	58.064	382.154	100,00%
%	45,74%	2,19%	3,37%	51,29%	35,35%	1,53%	11,83%	48,71%	81,09%	3,71%	15,19%	100,00%	

PASAJEROS TOTALES
SENTIDO: LEANDRO N. ALEM

<i>Sentido: a L. N. Alem</i>																			
HORA	ROS	ECH	LIN	TRO	LAC	DOR	MAL	AGA	MED	CGA	PUB	PST	CAB	URU	CPE	FLO	ALE	TOTAL	%
5 a 6	87	17	61	18	281	49	37	25	18	14	33	2	3	0	38	1	0	684	0,35%
6 a 7	577	101	333	88	1.040	168	205	151	97	45	138	20	15	10	134	12	0	3.133	1,60%
7 a 8	2.744	494	1.115	331	3.083	1.100	1.180	750	651	243	490	75	87	18	440	3	0	12.804	6,53%
8 a 9	4.014	826	1.767	665	4.801	1.353	1.952	568	1.174	501	1.041	179	228	86	887	5	0	20.047	10,23%
9 a 10	2.917	665	1.581	492	4.827	1.628	1.590	1.477	1.134	559	1.289	280	336	183	1.077	5	0	20.040	10,22%
10 a 11	1.521	431	961	286	2.737	1.109	1.609	1.030	444	524	1.125	323	394	325	971	17	0	13.808	7,04%
11 a 12	1.083	287	894	285	2.116	822	1.277	938	970	611	1.026	413	406	393	897	52	0	12.470	6,36%
12 a 13	975	276	849	359	1.834	764	1.288	904	985	632	979	456	539	477	910	52	0	12.279	6,26%
13 a 14	1.054	262	790	316	2.000	907	1.322	874	947	767	1.036	446	611	573	1.027	123	0	13.056	6,66%
14 a 15	883	247	752	323	1.798	853	1.225	883	911	667	964	522	436	512	1.137	287	0	12.400	6,33%
15 a 16	692	230	618	276	1.590	769	1.037	664	792	658	855	177	376	425	1.297	401	0	10.857	5,54%
16 a 17	802	296	740	470	1.446	899	1.092	715	889	757	776	83	402	397	1.189	559	0	11.512	5,87%
17 a 18	1.203	370	1.052	733	1.806	1.187	1.412	956	885	783	835	466	426	484	1.678	1.119	0	15.394	7,85%
18 a 19	1.172	330	1.007	930	1.873	1.175	1.491	847	1.022	810	984	503	461	564	2.132	1.769	0	17.070	8,71%
19 a 20	606	161	573	253	1.043	608	878	561	610	569	674	290	292	244	969	1.032	0	9.362	4,78%
20 a 21	466	118	382	150	649	354	648	421	411	606	414	145	159	115	584	283	0	5.905	3,01%
21 a 22	218	86	212	137	429	291	289	308	417	453	220	92	117	111	341	185	0	3.906	1,99%
22 a 23	50	29	57	51	132	75	59	72	101	376	71	24	49	27	84	37	0	1.294	0,66%
Total	21.064	5.224	13.744	6.162	33.485	14.111	18.591	12.144	12.458	9.575	12.948	4.496	5.337	4.944	15.793	5.942	0	196.020	100,00%
%	10,75%	2,67%	7,01%	3,14%	17,08%	7,20%	9,48%	6,20%	6,36%	4,88%	6,61%	2,29%	2,72%	2,52%	8,06%	3,03%	0,00%	100,00%	

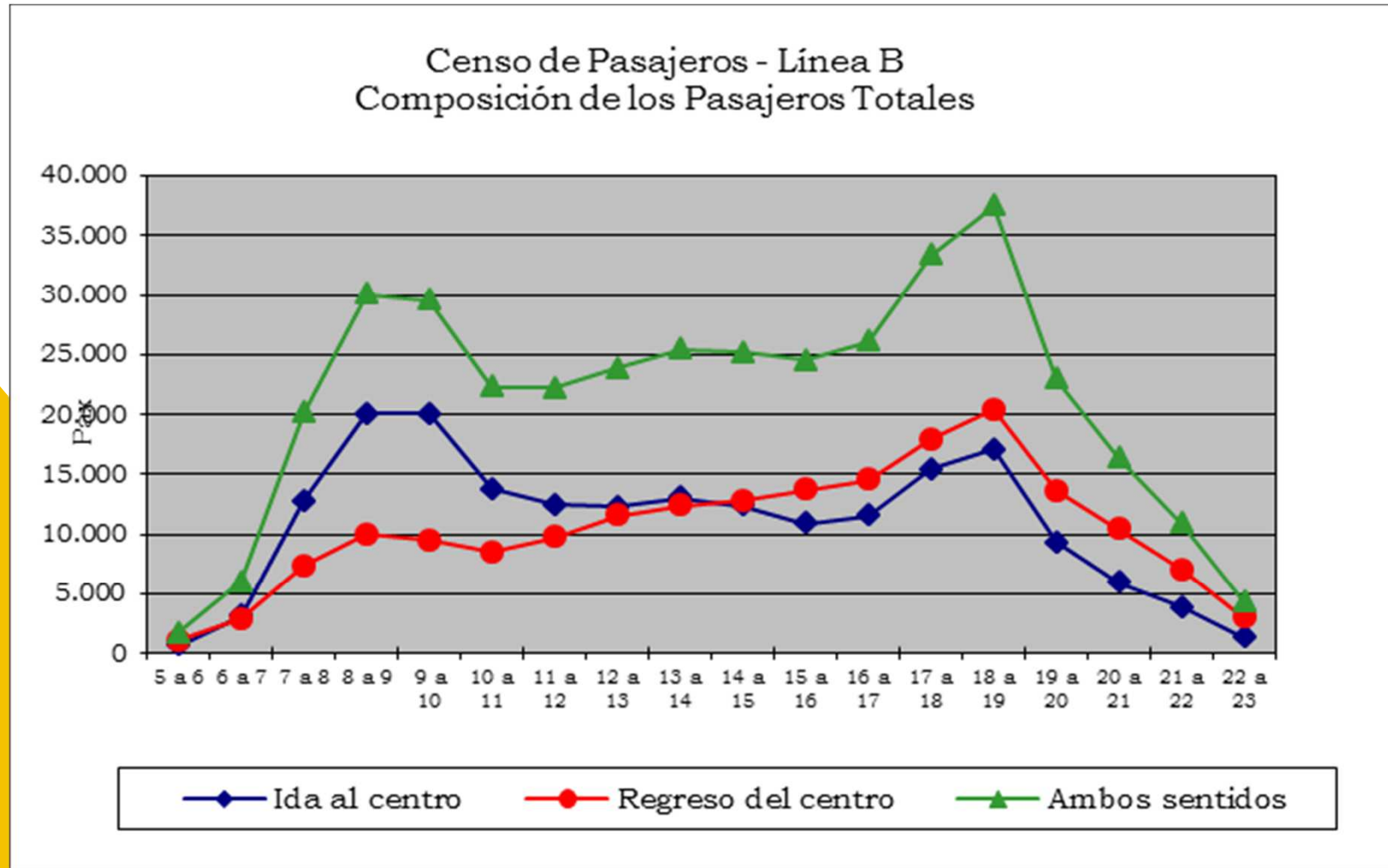
PASAJEROS TOTALES
SENTIDO: JUAN MANUEL DE ROSAS

<i>Sentido: a Juan Manuel de Rosas</i>																			
HORA	ROS	ECH	LIN	TRO	LAC	DOR	MAL	AGA	MED	CGA	PUB	PST	CAB	URU	CPE	FLO	ALE	TOTAL	%
5 a 6	0	0	0	0	2	1	0	2	0	34	136	26	33	8	602	3	193	1.041	0,56%
6 a 7	0	2	9	0	21	21	24	35	60	54	369	70	101	41	1.510	38	535	2.891	1,55%
7 a 8	0	172	193	49	86	96	115	171	209	139	840	192	252	178	3.279	113	1.225	7.310	3,93%
8 a 9	0	404	519	96	245	101	217	204	327	195	1.007	301	464	309	3.947	172	1.502	10.010	5,38%
9 a 10	0	192	250	64	171	76	140	170	302	174	1.015	330	447	407	3.939	306	1.500	9.483	5,09%
10 a 11	0	31	116	39	68	45	140	155	262	184	871	382	566	667	2.961	720	1.271	8.478	4,55%
11 a 12	0	19	54	14	60	30	157	176	275	279	962	608	807	985	3.067	1.058	1.146	9.697	5,21%
12 a 13	0	9	51	39	72	53	190	230	373	374	1.078	764	1.068	969	3.326	1.454	1.518	11.567	6,21%
13 a 14	0	8	83	47	74	52	191	222	331	364	1.059	718	1.136	1.339	3.305	1.638	1.799	12.365	6,64%
14 a 15	0	2	42	22	50	43	184	190	369	383	1.098	683	1.099	1.442	3.695	1.721	1.726	12.749	6,85%
15 a 16	0	4	39	20	61	60	190	193	377	418	1.257	845	1.197	1.530	3.602	2.012	1.877	13.684	7,35%
16 a 17	0	1	18	39	51	64	210	219	425	511	1.345	839	1.328	1.531	3.889	1.815	2.273	14.558	7,82%
17 a 18	0	4	24	33	59	87	294	236	504	596	1.363	902	1.419	1.690	3.975	2.712	4.029	17.927	9,63%
18 a 19	0	2	35	42	73	83	313	336	515	623	1.487	1.110	1.549	1.910	4.544	3.107	4.688	20.417	10,97%
19 a 20	0	3	24	24	50	50	230	228	431	566	1.085	848	1.276	1.397	3.227	1.655	2.525	13.620	7,32%
20 a 21	0	5	7	16	19	32	213	209	391	565	808	701	1.157	955	2.551	1.457	1.322	10.408	5,59%
21 a 22	0	1	9	4	22	20	111	154	359	432	489	598	661	687	1.884	776	769	6.976	3,75%
22 a 23	0	0	1	0	8	4	0	58	169	343	195	228	250	443	924	91	242	2.956	1,59%
Total	0	861	1.474	549	1.192	918	2.919	3.188	5.679	6.234	16.464	10.145	14.810	16.488	54.226	20.848	30.140	186.135	100,00%
%	0,00%	0,46%	0,79%	0,29%	0,64%	0,49%	1,57%	1,71%	3,05%	3,35%	8,85%	5,45%	7,96%	8,86%	29,13%	11,20%	16,19%	100,00%	

PASAJEROS TOTALES
AMBOS SENTIDOS

<i>Ambos sentidos</i>																			
HORA	ROS	ECH	LIN	TRO	LAC	DOR	MAL	AGA	MED	CGA	PUB	PST	CAB	URU	CPE	FLO	ALE	TOTAL	%
5 a 6	87	17	61	18	283	50	37	27	18	48	170	28	36	8	640	4	193	1.725	0,45%
6 a 7	577	103	342	88	1.061	189	229	186	157	99	507	90	116	51	1.644	50	535	6.024	1,58%
7 a 8	2.744	666	1.308	380	3.169	1.196	1.295	921	860	382	1.330	267	339	196	3.720	116	1.225	20.114	5,26%
8 a 9	4.014	1.230	2.286	761	5.046	1.454	2.169	772	1.501	696	2.048	480	692	395	4.834	177	1.502	30.057	7,87%
9 a 10	2.917	857	1.831	556	4.998	1.704	1.730	1.647	1.436	733	2.304	610	783	590	5.016	311	1.500	29.523	7,73%
10 a 11	1.521	462	1.077	325	2.805	1.154	1.749	1.185	706	708	1.996	705	960	992	3.932	737	1.271	22.285	5,83%
11 a 12	1.083	306	948	299	2.176	852	1.434	1.114	1.245	890	1.987	1.021	1.213	1.378	3.964	1.110	1.146	22.166	5,80%
12 a 13	975	285	900	398	1.906	817	1.478	1.134	1.358	1.006	2.056	1.220	1.607	1.446	4.236	1.506	1.518	23.846	6,24%
13 a 14	1.054	270	873	363	2.074	959	1.513	1.096	1.278	1.131	2.095	1.164	1.747	1.912	4.332	1.761	1.799	25.421	6,65%
14 a 15	883	249	794	345	1.848	896	1.409	1.073	1.280	1.050	2.063	1.205	1.535	1.954	4.832	2.008	1.726	25.149	6,58%
15 a 16	692	234	657	296	1.651	829	1.227	857	1.169	1.076	2.113	1.022	1.573	1.955	4.900	2.413	1.877	24.541	6,42%
16 a 17	802	297	758	509	1.497	963	1.302	934	1.314	1.268	2.121	922	1.730	1.928	5.078	2.374	2.273	26.070	6,82%
17 a 18	1.203	374	1.076	766	1.865	1.274	1.706	1.192	1.389	1.379	2.198	1.368	1.845	2.174	5.653	3.831	4.029	33.322	8,72%
18 a 19	1.172	332	1.042	972	1.946	1.258	1.804	1.183	1.537	1.433	2.471	1.613	2.010	2.474	6.676	4.876	4.688	37.487	9,81%
19 a 20	606	164	597	277	1.093	658	1.108	789	1.041	1.135	1.759	1.138	1.568	1.641	4.196	2.687	2.525	22.982	6,01%
20 a 21	466	123	389	166	668	386	861	630	802	1.171	1.222	846	1.316	1.070	3.135	1.740	1.322	16.313	4,27%
21 a 22	218	87	221	141	451	311	400	462	776	885	709	690	778	798	2.224	961	769	10.881	2,85%
22 a 23	50	29	58	51	140	79	59	130	270	719	266	252	299	470	1.007	128	242	4.249	1,11%
Total	21.064	6.085	15.218	6.711	34.677	15.029	21.510	15.332	18.137	15.809	29.413	14.641	20.147	21.432	70.019	26.790	30.140	382.154	100,00%
%	5,51%	1,59%	3,98%	1,76%	9,07%	3,93%	5,63%	4,01%	4,75%	4,14%	7,70%	3,83%	5,27%	5,61%	18,32%	7,01%	7,89%	92,90%	

COMPOSICIÓN DE PASAJEROS TOTALES



COMPOSICIÓN DE PASAJEROS EN HORA PICO

Línea B
De 8 a 9 hs.

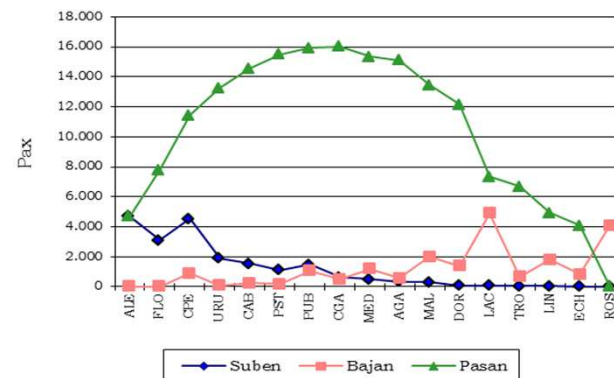
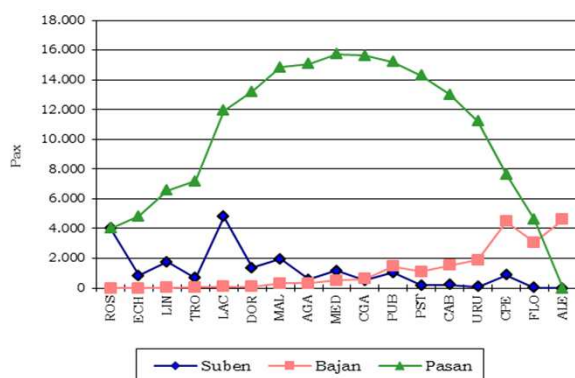
a L.N.Alem	Suben	Bajan	Pasan	Dist. a prox. est.	Dist. total Km
ROS	4.014	0	4.014	0,728	2.922
ECH	826	2	4.837	0,883	4.271
LIN	1.767	34	6.570	0,700	4.599
TRO	665	41	7.194	1,085	7.805
LAC	4.801	72	11.923	0,801	9.550
DOR	1.353	81	13.194	1,083	14.290
MAL	1.952	307	14.839	0,891	13.222
AGA	568	330	15.077	0,898	13.539
MED	1.174	506	15.746	0,855	13.462
CGA	501	612	15.635	0,632	9.881
PUB	1.041	1.460	15.216	0,544	8.277
PST	179	1.090	14.305	0,607	8.683
CAB	228	1.521	13.012	0,508	6.610
URU	86	1.875	11.223	0,538	6.038
CPE	887	4.462	7.648	0,624	4.772
FLO	5	3.050	4.603	0,393	1.809
ALE	0	4.603	0	0,000	0

Distancia media por pasajero (Km)	6,47
% sobre longitud de la línea	54,98%
Factor de renovación	1,27
STMC HP PAGOS	5,1%

De 18 a 19 hs.

a Rosas	Suben	Bajan	Pasan	Dist. a prox. est.	Dist. total Km
ALE	4.688	0	4.688	0,393	1.842
FLO	3.107	5	7.789	0,624	4.860
CPE	4.544	903	11.430	0,538	6.149
URU	1.910	88	13.252	0,508	6.732
CAB	1.549	232	14.569	0,607	8.844
PST	1.110	182	15.497	0,544	8.430
PUB	1.487	1.060	15.924	0,632	10.064
CGA	623	510	16.037	0,855	13.711
MED	515	1.196	15.356	0,898	13.790
AGA	336	578	15.113	0,891	13.466
MAL	313	1.988	13.438	1,083	14.554
DOR	83	1.378	12.143	0,801	9.727
LAC	73	4.890	7.327	1,085	7.949
TRO	42	677	6.691	0,700	4.684
LIN	35	1.800	4.927	0,883	4.350
ECH	2	841	4.088	0,728	2.976
ROS	0	4.088	0	0,000	0

Distancia media por pasajero (Km)	6,47
% sobre longitud de la línea	54,98%
Factor de renovación	1,27
STMC HP PAGOS	5,2%



LÍNEA C



COMPOSICIÓN DE PASAJEROS POR ESTACIÓN

ESTACION	Sentido: a Retiro				Sentido: a Constitución				Sentido: Ambos				
	Directos	Franquiados + Pases pagos	Comb	Totales	Directos	Franquiados + Pases pagos	Comb	Totales	Directos	Franquiados + Pases pagos	Comb	Totales	%
CON	74.349	4.175		78.524	0	0		0	74.349	4.175		78.524	30,26%
SJU	5.798	262		6.061	519	25		543	6.317	287		6.604	2,54%
INC	5.788	345	7.696	13.829	1.226	61	2.635	3.922	7.014	406	10.330	17.751	6,84%
MOR	1.710	161		1.871	6.386	294		6.680	8.096	455		8.551	3,29%
AVM	2.141	136	10.401	12.678	3.026	190	10.276	13.492	5.166	327	20.677	26.170	10,08%
DNO	1.104	39	9.106	10.249	1.534	56	47.359	48.949	2.637	95	56.465	59.197	22,81%
LAV	2.029	77		2.106	9.363	363		9.727	11.392	440		11.833	4,56%
SMA	527	47		574	11.066	382		11.448	11.593	429		12.022	4,63%
RET	0	0		0	36.663	2.211		38.874	36.663	2.211		38.874	14,98%
TOTAL	93.446	5.243	27.203	125.891	69.783	3.582	60.270	133.634	163.228	8.825	87.472	259.525	100,00%
%	36,01%	2,02%	10,48%	48,51%	26,89%	1,38%	23,22%	51,49%	62,89%	3,40%	33,70%	100,00%	

COMPOSICIÓN DE PASAJEROS POR BANDA HORARIA

HORA	<i>Sentido: a Retiro</i>				<i>Sentido: a Constitución</i>				<i>Sentido: Ambos</i>				
	<i>Directos</i>	<i>Franquiados + Pases pagos</i>	<i>Comb</i>	<i>Totales</i>	<i>Directos</i>	<i>Franquiados + Pases pagos</i>	<i>Comb</i>	<i>Totales</i>	<i>Directos</i>	<i>Franquiados + Pases pagos</i>	<i>Comb</i>	<i>Totales</i>	<i>%</i>
5 a 6	1.296	130	106	1.532	250	34	154	439	1.546	164	261	1.970	0,76%
6 a 7	5.499	278	458	6.235	1.107	62	751	1.920	6.606	340	1.209	8.155	3,14%
7 a 8	10.078	357	1.475	11.910	2.415	114	2.109	4.639	12.493	471	3.584	16.549	6,38%
8 a 9	11.934	448	2.679	15.062	4.253	142	2.881	7.275	16.187	590	5.560	22.337	8,61%
9 a 10	14.488	563	2.926	17.977	4.166	145	3.092	7.402	18.654	708	6.018	25.379	9,78%
10 a 11	7.144	540	1.986	9.670	3.823	232	2.804	6.858	10.967	772	4.790	16.528	6,37%
11 a 12	5.645	435	1.674	7.754	3.438	253	3.067	6.758	9.082	689	4.741	14.512	5,59%
12 a 13	4.552	382	1.461	6.395	3.421	322	3.299	7.042	7.973	704	4.760	13.437	5,18%
13 a 14	4.707	374	1.345	6.426	3.807	311	2.874	6.992	8.514	685	4.218	13.417	5,17%
14 a 15	3.983	328	1.741	6.052	4.337	265	3.907	8.509	8.320	593	5.648	14.561	5,61%
15 a 16	3.718	327	1.576	5.621	4.656	278	4.182	9.117	8.375	605	5.758	14.738	5,68%
16 a 17	4.109	307	1.850	6.267	5.592	292	5.371	11.254	9.701	599	7.221	17.521	6,75%
17 a 18	4.858	247	2.271	7.375	7.829	295	7.455	15.580	12.687	542	9.726	22.955	8,84%
18 a 19	5.619	226	2.357	8.202	9.717	251	7.489	17.457	15.336	477	9.847	25.660	9,89%
19 a 20	2.604	122	1.310	4.036	5.452	197	4.336	9.985	8.056	320	5.646	14.021	5,40%
20 a 21	1.668	94	1.139	2.901	3.019	128	3.618	6.765	4.687	222	4.757	9.666	3,72%
21 a 22	1.150	69	585	1.803	1.910	155	2.008	4.074	3.060	224	2.593	5.877	2,26%
22 a 23	394	17	264	675	591	104	872	1.568	985	121	1.137	2.243	0,86%
TOTAL	93.446	5.243	27.203	125.891	69.783	3.582	60.270	133.634	163.228	8.825	87.472	259.525	100,00%
%	36,01%	2,02%	10,48%	48,51%	26,89%	1,38%	23,22%	51,49%	62,89%	3,40%	33,70%	100,00%	

PASAJEROS TOTALES
SENTIDO: RETIRO

<i>Sentido: a Retiro</i>											
HORA	CON	SJU	INC	MOR	AVM	DNO	LAV	SMA	RET	TOTAL	%
5 a 6	1.364	20	55	10	45	36	2	0	0	1.532	1,22%
6 a 7	5.539	86	218	7	209	157	16	3	0	6.235	4,95%
7 a 8	9.759	301	677	12	629	507	20	5	0	11.910	9,46%
8 a 9	11.399	515	1.074	22	1.100	910	36	6	0	15.062	11,96%
9 a 10	13.885	588	1.204	26	1.224	996	46	8	0	17.977	14,28%
10 a 11	6.733	375	896	50	863	680	64	9	0	9.670	7,68%
11 a 12	4.687	433	1.142	78	714	632	51	17	0	7.754	6,16%
12 a 13	3.753	486	760	88	664	533	88	23	0	6.395	5,08%
13 a 14	3.958	477	619	118	618	506	107	22	0	6.426	5,10%
14 a 15	3.116	351	884	130	800	636	107	28	0	6.052	4,81%
15 a 16	2.758	322	782	149	825	581	178	25	0	5.621	4,46%
16 a 17	2.920	308	913	202	898	735	241	50	0	6.267	4,98%
17 a 18	2.946	454	1.209	325	1.098	967	277	99	0	7.375	5,86%
18 a 19	3.233	501	1.252	305	1.203	1.079	460	169	0	8.202	6,52%
19 a 20	1.226	306	710	151	749	587	239	67	0	4.036	3,21%
20 a 21	796	199	689	115	558	412	109	23	0	2.901	2,30%
21 a 22	400	257	459	61	354	205	47	20	0	1.803	1,43%
22 a 23	52	84	284	22	127	89	17	0	0	675	0,54%
Total	78.524	6.061	13.829	1.871	12.678	10.249	2.106	574	0	125.891	100,00%
%	62,37%	4,81%	10,98%	1,49%	10,07%	8,14%	1,67%	0,46%	0,00%	100,00%	

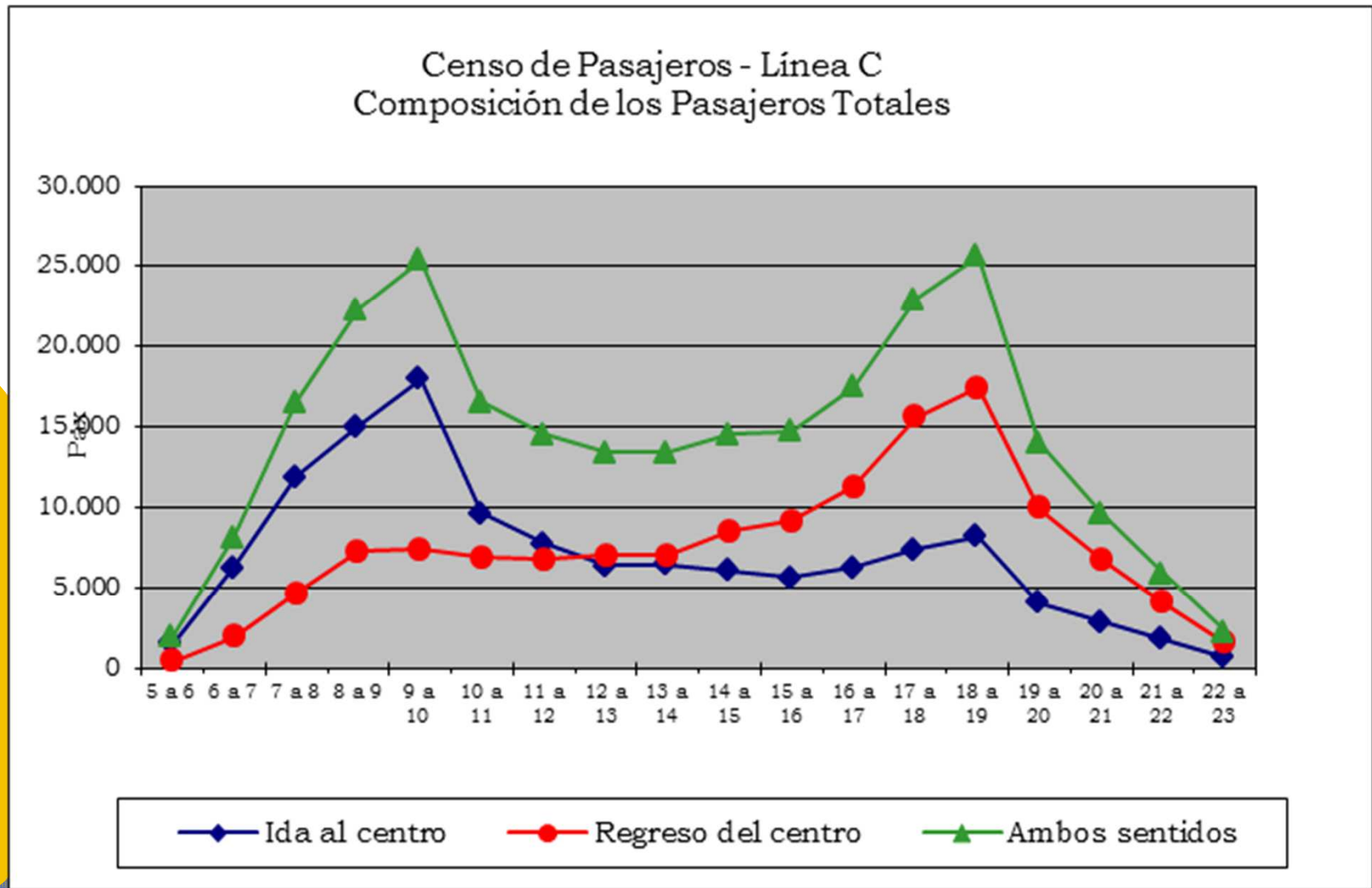
PASAJEROS TOTALES
SENTIDO: CONSTITUCIÓN

<i>Sentido: a Constitución</i>											
HORA	CON	SJU	INC	MOR	AVM	DNO	LAV	SMA	RET	TOTAL	%
5 a 6	0	8	10	13	27	123	17	19	223	439	0,33%
6 a 7	0	1	50	40	133	596	37	59	1.004	1.920	1,44%
7 a 8	0	11	116	126	390	1.663	81	133	2.118	4.639	3,47%
8 a 9	0	43	167	162	565	2.277	90	255	3.716	7.275	5,44%
9 a 10	0	32	198	223	632	2.460	111	265	3.480	7.402	5,54%
10 a 11	0	36	160	321	639	2.239	171	371	2.921	6.858	5,13%
11 a 12	0	45	248	377	751	2.445	297	580	2.014	6.758	5,06%
12 a 13	0	40	206	424	775	2.684	376	491	2.046	7.042	5,27%
13 a 14	0	25	169	415	798	2.342	469	641	2.132	6.992	5,23%
14 a 15	0	83	225	465	889	3.195	656	716	2.280	8.509	6,37%
15 a 16	0	15	248	561	1.002	3.464	832	881	2.114	9.117	6,82%
16 a 17	0	34	318	631	1.203	4.381	1.044	1.052	2.591	11.254	8,42%
17 a 18	0	18	517	861	1.670	6.087	1.466	1.624	3.336	15.580	11,66%
18 a 19	0	12	470	1.114	1.668	6.259	1.771	1.966	4.197	17.457	13,06%
19 a 20	0	4	267	469	989	3.553	1.091	1.172	2.440	9.985	7,47%
20 a 21	0	19	241	279	756	2.904	635	707	1.224	6.765	5,06%
21 a 22	0	71	157	164	445	1.592	466	366	813	4.074	3,05%
22 a 23	0	44	153	35	158	686	117	150	225	1.568	1,17%
Total	0	543	3.922	6.680	13.492	48.949	9.727	11.448	38.874	133.634	100,00%
%	0,00%	0,41%	2,93%	5,00%	10,10%	36,63%	7,28%	8,57%	29,09%	100,00%	

PASAJEROS TOTALES
AMBOS SENTIDOS

<i>Ambos sentidos</i>											
HORA	CON	SJU	INC	MOR	AVM	DNO	LAV	SMA	RET	TOTAL	%
5 a 6	1.364	28	65	23	71	158	19	19	223	1.970	0,76%
6 a 7	5.539	87	268	47	342	752	53	62	1.004	8.155	3,14%
7 a 8	9.759	312	793	138	1.019	2.170	101	138	2.118	16.549	6,38%
8 a 9	11.399	558	1.242	184	1.665	3.187	126	261	3.716	22.337	8,61%
9 a 10	13.885	620	1.403	249	1.856	3.456	157	273	3.480	25.379	9,78%
10 a 11	6.733	411	1.056	371	1.502	2.919	235	380	2.921	16.528	6,37%
11 a 12	4.687	478	1.391	455	1.465	3.078	348	597	2.014	14.512	5,59%
12 a 13	3.753	526	966	512	1.439	3.217	464	514	2.046	13.437	5,18%
13 a 14	3.958	502	788	533	1.417	2.848	576	663	2.132	13.417	5,17%
14 a 15	3.116	434	1.110	595	1.689	3.831	763	744	2.280	14.561	5,61%
15 a 16	2.758	337	1.029	710	1.828	4.046	1.010	906	2.114	14.738	5,68%
16 a 17	2.920	342	1.231	833	2.101	5.116	1.285	1.102	2.591	17.521	6,75%
17 a 18	2.946	472	1.726	1.186	2.768	7.055	1.743	1.723	3.336	22.955	8,84%
18 a 19	3.233	513	1.722	1.419	2.871	7.339	2.231	2.135	4.197	25.660	9,89%
19 a 20	1.226	310	977	620	1.739	4.140	1.330	1.239	2.440	14.021	5,40%
20 a 21	796	218	930	394	1.314	3.316	745	730	1.224	9.666	3,72%
21 a 22	400	328	616	225	799	1.796	513	386	813	5.877	2,26%
22 a 23	52	128	438	57	285	774	134	150	225	2.243	0,86%
Total	78.524	6.604	17.751	8.551	26.170	59.197	11.833	12.022	38.874	259.525	100,00%
%	30,26%	2,54%	6,84%	3,29%	10,08%	22,81%	4,56%	4,63%	14,98%	100,00%	

COMPOSICIÓN DE PASAJEROS TOTALES



COMPOSICIÓN DE PASAJEROS EN HORA PICO
Línea C
De 8 a 9 hs.

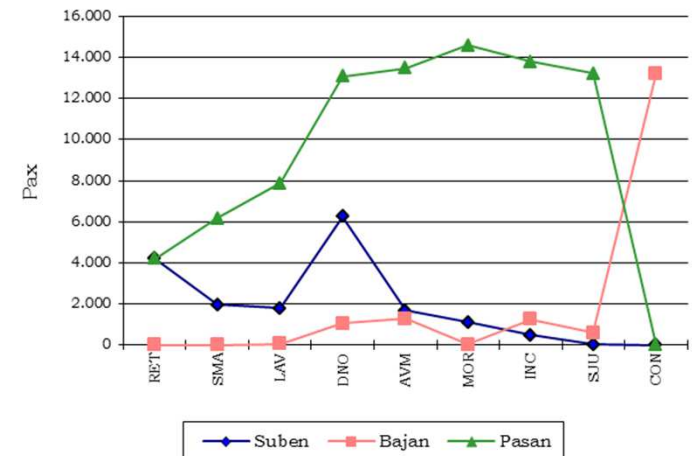
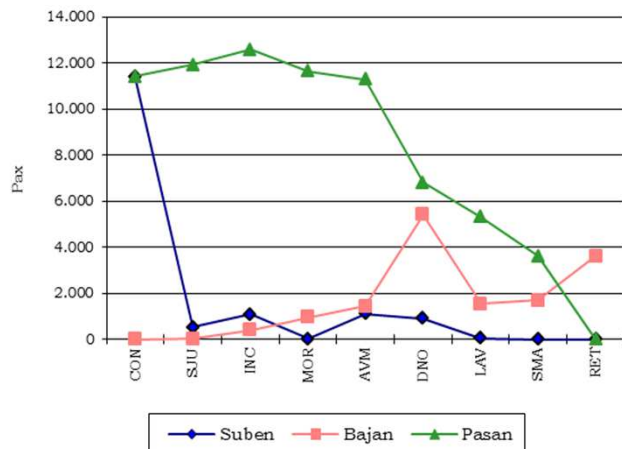
a Retiro	Suben	Bajan	Pasan	Dist. a prox. est.	Dist. total Km
Estación					
CON	11.399	0	11.399	0,579	6.600
SJU	515	11	11.903	0,492	5.856
INC	1.074	405	12.572	0,615	7.732
MOR	22	961	11.633	0,394	4.583
AVM	1.100	1.439	11.294	0,555	6.268
DNO	910	5.401	6.804	0,427	2.905
LAV	36	1.528	5.311	0,793	4.212
SMA	6	1.696	3.621	0,439	1.590
RET	0	3.621	0	0,000	0

De 18 a 19 hs.

a Constitución	Suben	Bajan	Pasan	Dist. a prox. est.	Dist. total Km
Estación					
RET	4.197	0	4.197	0,439	1.842
SMA	1.966	7	6.156	0,793	4.882
LAV	1.771	42	7.886	0,427	3.367
DNO	6.259	1.055	13.090	0,555	7.265
AVM	1.668	1.275	13.483	0,394	5.312
MOR	1.114	25	14.572	0,615	8.962
INC	470	1.245	13.796	0,492	6.788
SJU	12	596	13.212	0,579	7.650
CON	0	13.212	0	0,000	0

Distancia media por pasajero (Km)	2,64
% sobre longitud de la línea	61,45%
Factor de renovación	1,20
STMC HP PAGOS	7,70%

Distancia media por pasajero (Km)	2,64
% sobre longitud de la línea	61,45%
Factor de renovación	1,20
STMC HP PAGOS	8,93%



LÍNEA D



COMPOSICIÓN DE PASAJEROS POR ESTACIÓN

ESTACION	Sentido: a Catedral				Sentido: a Congreso de Tucumán				Sentido: Ambos				
	Directos	Franquiados + Pases pagos	Comb	Totales	Directos	Franquiados + Pases pagos	Comb	Totales	Directos	Franquiados + Pases pagos	Comb	Totales	%
COT	42.421	1.758		44.179	0	0		0	42.421	1.758		44.179	11,29%
JUR	16.384	663		17.047	1.553	56		1.609	17.937	719		18.656	4,77%
HER	11.155	531		11.686	1.015	45		1.060	12.170	576		12.746	3,26%
OLL	11.607	539		12.146	1.932	88		2.020	13.539	627		14.166	3,62%
CAR	8.210	469		8.679	1.796	105		1.901	10.006	574		10.580	2,70%
PAL	13.330	587		13.917	4.107	171		4.278	17.437	758		18.195	4,65%
PIT	9.020	402		9.421	1.955	85		2.041	10.975	487		11.462	2,93%
SOR	9.083	525		9.608	3.820	202		4.022	12.903	727		13.630	3,48%
BUL	10.805	427		11.232	5.988	261		6.249	16.793	688		17.481	4,47%
AGU	7.700	324		8.024	3.825	157		3.982	11.525	481		12.006	3,07%
PUD	8.171	338		8.508	7.315	288		7.604	15.486	626		16.112	4,12%
FAC	9.621	465		10.086	11.064	471		11.535	20.685	936		21.621	5,52%
CAD	5.962	245		6.208	11.359	511		11.869	17.321	756		18.077	4,62%
TRI	7.296	337		7.633	10.885	479		11.364	18.181	816		18.997	4,85%
9DJ	1.111	107	9.023	10.241	12.810	523	58.610	71.944	13.922	630	67.633	82.184	21,00%
CAT	0	0		0	41.727	1.311	18.224	61.262	41.727	1.311	18.224	61.262	15,65%
TOTAL	171.876	7.717	9.023	188.616	121.152	4.753	76.834	202.739	293.028	12.470	85.857	391.355	100,00%
%	43,92%	1,97%	2,31%	48,20%	30,96%	1,21%	19,63%	51,80%	74,88%	3,19%	21,94%	100,00%	

COMPOSICIÓN DE PASAJEROS POR BANDA HORARIA

HORA	<i>Sentido: a Catedral</i>				<i>Sentido: a Congreso de Tucumán</i>				<i>Sentido: Ambos</i>				
	<i>Directos</i>	<i>Franquiciados + Pases pagos</i>	<i>Comb</i>	<i>Totales</i>	<i>Directos</i>	<i>Franquiciados + Pases pagos</i>	<i>Comb</i>	<i>Totales</i>	<i>Directos</i>	<i>Franquiciados + Pases pagos</i>	<i>Comb</i>	<i>Totales</i>	<i>%</i>
5 a 6	268	43	179	490	73	7	693	772	341	50	871	1.262	0,32%
6 a 7	2.258	156	272	2.685	641	41	2.264	2.946	2.899	197	2.536	5.631	1,44%
7 a 8	9.449	439	357	10.244	2.913	122	5.836	8.870	12.361	561	6.193	19.115	4,88%
8 a 9	18.273	472	686	19.432	4.955	142	7.565	12.662	23.228	614	8.251	32.094	8,20%
9 a 10	17.112	432	1.142	18.686	4.940	110	7.026	12.076	22.053	541	8.168	30.762	7,86%
10 a 11	12.451	761	993	14.204	4.801	315	6.004	11.121	17.252	1.076	6.997	25.325	6,47%
11 a 12	11.160	819	820	12.799	5.989	364	4.452	10.806	17.149	1.183	5.272	23.605	6,03%
12 a 13	11.247	874	632	12.753	7.171	491	4.513	12.176	18.419	1.365	5.145	24.929	6,37%
13 a 14	11.606	751	558	12.914	8.220	492	5.304	14.016	19.826	1.243	5.861	26.930	6,88%
14 a 15	10.573	647	569	11.789	8.297	511	4.545	13.353	18.871	1.158	5.113	25.142	6,42%
15 a 16	9.739	624	458	10.821	9.246	513	4.325	14.084	18.984	1.137	4.783	24.905	6,36%
16 a 17	11.340	370	439	12.149	10.079	316	4.553	14.949	21.419	686	4.992	27.098	6,92%
17 a 18	13.309	393	451	14.153	13.487	386	5.199	19.072	26.795	779	5.651	33.225	8,49%
18 a 19	14.278	376	457	15.110	16.640	392	5.723	22.755	30.918	768	6.180	37.866	9,68%
19 a 20	8.572	223	391	9.186	10.268	195	3.717	14.180	18.840	418	4.109	23.366	5,97%
20 a 21	5.866	157	371	6.394	7.348	172	2.537	10.057	13.215	329	2.907	16.451	4,20%
21 a 22	3.676	133	177	3.986	4.844	133	1.821	6.798	8.520	266	1.999	10.784	2,76%
22 a 23	701	47	71	819	1.239	50	758	2.046	1.939	97	829	2.865	0,73%
TOTAL	171.876	7.717	9.023	188.616	121.152	4.753	76.834	202.739	293.028	12.470	85.857	391.355	100,00%
%	43,92%	1,97%	2,31%	48,20%	30,96%	1,21%	19,63%	51,80%	74,88%	3,19%	21,94%	100,00%	

PASAJEROS TOTALES
SENTIDO: CATEDRAL

<i>Sentido: a Catedral</i>																		
HORA	COT	JUR	HER	OLL	CAR	PAL	PIT	SOR	BUL	AGU	PUD	FAC	CAD	TRI	9DJ	CAT	TOTAL	%
5 a 6	134	18	6	23	8	50	5	10	10	11	16	7	2	1	189	0	490	0,26%
6 a 7	993	253	145	347	137	151	82	75	71	46	41	27	13	9	296	0	2.685	1,42%
7 a 8	3.888	823	639	742	481	793	395	606	516	410	297	126	98	45	386	0	10.244	5,43%
8 a 9	6.570	1.756	1.291	1.263	999	1.273	764	1.151	1.054	779	853	491	294	152	742	0	19.432	10,30%
9 a 10	4.896	1.373	1.074	1.241	870	1.497	762	1.081	1.109	944	1.042	756	513	299	1.228	0	18.686	9,91%
10 a 11	3.194	1.038	795	977	826	1.041	674	744	855	698	779	586	408	482	1.107	0	14.204	7,53%
11 a 12	2.501	1.025	827	809	518	1.006	539	617	757	581	737	888	533	514	947	0	12.799	6,79%
12 a 13	2.307	1.103	799	795	587	904	563	720	731	518	576	909	721	767	755	0	12.753	6,76%
13 a 14	2.485	1.087	735	862	640	991	551	520	828	578	686	739	595	929	690	0	12.914	6,85%
14 a 15	2.131	1.089	728	707	465	957	661	562	745	517	588	716	521	681	721	0	11.789	6,25%
15 a 16	1.924	992	685	731	514	756	612	522	732	486	457	678	437	704	592	0	10.821	5,74%
16 a 17	2.334	1.248	820	724	465	892	712	632	742	446	457	718	538	853	570	0	12.149	6,44%
17 a 18	3.239	1.243	884	839	672	1.011	900	692	794	624	595	816	554	767	522	0	14.153	7,50%
18 a 19	3.768	1.646	843	853	653	1.194	906	711	822	572	507	756	566	843	470	0	15.110	8,01%
19 a 20	1.871	1.030	658	520	398	690	631	403	613	388	380	660	194	350	400	0	9.186	4,87%
20 a 21	1.137	817	433	379	234	382	401	314	469	289	287	636	149	92	375	0	6.394	3,39%
21 a 22	636	418	252	284	167	263	201	192	311	111	210	553	67	141	180	0	3.986	2,11%
22 a 23	171	87	71	50	45	67	64	56	73	28	1	24	6	6	71	0	819	0,43%
Total	44.179	17.047	11.686	12.146	8.679	13.917	9.421	9.608	11.232	8.024	8.508	10.086	6.208	7.633	10.241	0	188.616	100,00%
%	23,42%	9,04%	6,20%	6,44%	4,60%	7,38%	4,99%	5,09%	5,95%	4,25%	4,51%	5,35%	3,29%	4,05%	5,43%	0,00%	100,00%	

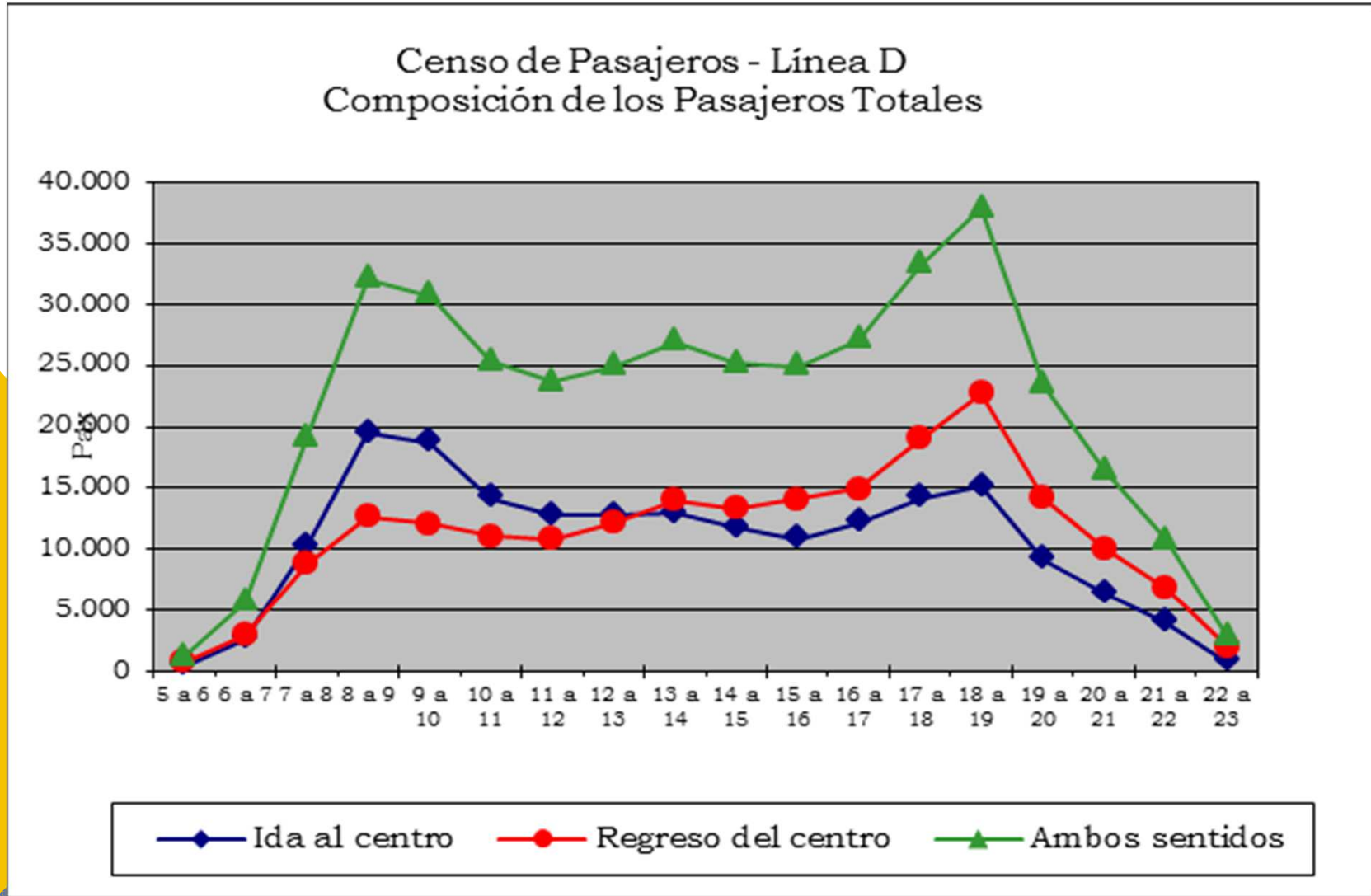
PASAJEROS TOTALES
SENTIDO: CONGRESO DE TUCUMÁN

<i>Sentido: a Congreso de Tucumán</i>																		
HORA	COT	JUR	HER	OLL	CAR	PAL	PIT	SOR	BUL	AGU	PUD	FAC	CAD	TRI	9DJ	CAT	TOTAL	%
5 a 6	0	0	3	0	4	3	2	2	3	4	0	5	3	1	540	203	772	0,38%
6 a 7	0	21	2	16	5	58	7	32	27	36	40	55	54	29	1.825	739	2.946	1,45%
7 a 8	0	150	200	64	54	237	84	157	178	217	199	225	187	123	4.837	1.958	8.870	4,38%
8 a 9	0	379	104	120	91	338	151	303	315	266	213	418	445	237	6.472	2.809	12.662	6,25%
9 a 10	0	213	62	127	87	457	168	288	344	220	175	486	361	362	6.027	2.700	12.076	5,96%
10 a 11	0	148	38	138	122	247	131	249	260	174	265	453	450	466	5.251	2.729	11.121	5,49%
11 a 12	0	56	50	156	83	236	135	174	327	206	320	748	672	758	4.149	2.736	10.806	5,33%
12 a 13	0	89	54	126	155	238	176	273	398	189	506	885	815	706	4.299	3.265	12.176	6,01%
13 a 14	0	66	44	138	123	328	177	232	414	202	456	834	884	1.103	4.973	4.041	14.016	6,91%
14 a 15	0	69	35	126	148	267	69	213	444	226	594	711	922	1.122	4.540	3.867	13.353	6,59%
15 a 16	0	49	73	114	139	205	93	270	484	279	688	859	912	1.022	4.499	4.397	14.084	6,95%
16 a 17	0	64	67	170	140	276	135	280	409	329	778	943	992	797	4.625	4.942	14.949	7,37%
17 a 18	0	73	127	217	159	371	140	303	581	310	765	975	1.170	980	5.352	7.550	19.072	9,41%
18 a 19	0	91	56	199	230	508	170	388	570	388	882	1.010	1.233	1.460	5.934	9.636	22.755	11,22%
19 a 20	0	55	76	131	159	226	201	327	614	358	727	947	1.016	898	3.727	4.718	14.180	6,99%
20 a 21	0	36	36	105	100	140	110	264	497	323	603	970	954	664	2.428	2.828	10.057	4,96%
21 a 22	0	17	27	61	88	82	56	211	330	200	309	974	587	439	1.765	1.652	6.798	3,35%
22 a 23	0	34	7	12	14	61	34	56	54	53	83	37	212	195	703	491	2.046	1,01%
Total	0	1.609	1.060	2.020	1.901	4.278	2.041	4.022	6.249	3.982	7.604	11.535	11.869	11.364	71.944	61.262	202.739	100,00%
%	0,00%	0,79%	0,52%	1,00%	0,94%	2,11%	1,01%	1,98%	3,08%	1,96%	3,75%	5,69%	5,85%	5,61%	35,49%	30,22%	100,00%	

PASAJEROS TOTALES
AMBOS SENTIDOS

<i>Ambos sentidos</i>																		
HORA	COT	JUR	HER	OLL	CAR	PAL	PIT	SOR	BUL	AGU	PUD	FAC	CAD	TRI	9DJ	CAT	TOTAL	%
5 a 6	134	18	9	23	12	53	7	12	13	15	16	12	4	2	729	203	1.262	0,32%
6 a 7	993	274	147	363	142	209	89	107	98	82	81	82	67	38	2.120	739	5.631	1,44%
7 a 8	3.888	973	839	806	535	1.030	479	763	694	627	496	351	285	168	5.223	1.958	19.115	4,88%
8 a 9	6.570	2.135	1.395	1.383	1.090	1.611	915	1.454	1.369	1.045	1.066	909	739	389	7.214	2.809	32.094	8,20%
9 a 10	4.896	1.586	1.136	1.368	957	1.954	930	1.369	1.453	1.164	1.217	1.242	874	661	7.255	2.700	30.762	7,86%
10 a 11	3.194	1.186	833	1.115	948	1.288	805	993	1.115	872	1.044	1.039	858	948	6.358	2.729	25.325	6,47%
11 a 12	2.501	1.081	877	965	601	1.242	674	791	1.084	787	1.057	1.636	1.205	1.272	5.096	2.736	23.605	6,03%
12 a 13	2.307	1.192	853	921	742	1.142	739	993	1.129	707	1.082	1.794	1.536	1.473	5.054	3.265	24.929	6,37%
13 a 14	2.485	1.153	779	1.000	763	1.319	728	752	1.242	780	1.142	1.573	1.479	2.032	5.662	4.041	26.930	6,88%
14 a 15	2.131	1.158	763	833	613	1.224	730	775	1.189	743	1.182	1.427	1.443	1.803	5.261	3.867	25.142	6,42%
15 a 16	1.924	1.041	758	845	653	961	705	792	1.216	765	1.145	1.537	1.349	1.726	5.091	4.397	24.905	6,36%
16 a 17	2.334	1.312	887	894	605	1.168	847	912	1.151	775	1.235	1.661	1.530	1.650	5.195	4.942	27.098	6,92%
17 a 18	3.239	1.316	1.011	1.056	831	1.382	1.040	995	1.375	934	1.360	1.791	1.724	1.747	5.874	7.550	33.225	8,49%
18 a 19	3.768	1.737	899	1.052	883	1.702	1.076	1.099	1.392	960	1.389	1.766	1.799	2.303	6.404	9.636	37.866	9,68%
19 a 20	1.871	1.085	734	651	557	916	832	730	1.227	746	1.107	1.607	1.210	1.248	4.128	4.718	23.366	5,97%
20 a 21	1.137	853	469	484	334	522	511	578	966	612	890	1.606	1.103	756	2.802	2.828	16.451	4,20%
21 a 22	636	435	279	345	255	345	257	403	641	311	519	1.527	654	580	1.945	1.652	10.784	2,76%
22 a 23	171	121	78	62	59	127	98	112	127	81	84	61	218	201	774	491	2.865	0,73%
Total	44.179	18.656	12.746	14.166	10.580	18.195	11.462	13.630	17.481	12.006	16.112	21.621	18.077	18.997	82.184	61.262	391.355	100,00%
%	11,29%	4,77%	3,26%	3,62%	2,70%	4,65%	2,93%	3,48%	4,47%	3,07%	4,12%	5,52%	4,62%	4,85%	21,00%	15,65%	100,00%	

COMPOSICIÓN DE PASAJEROS TOTALES



COMPOSICIÓN DE PASAJEROS EN HORA PICO

Línea D
De 8 a 9 hs.

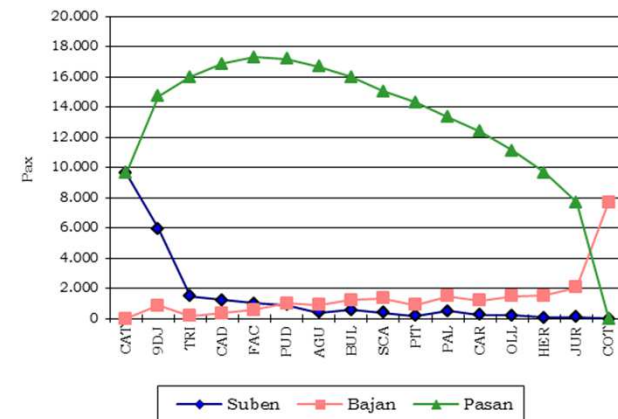
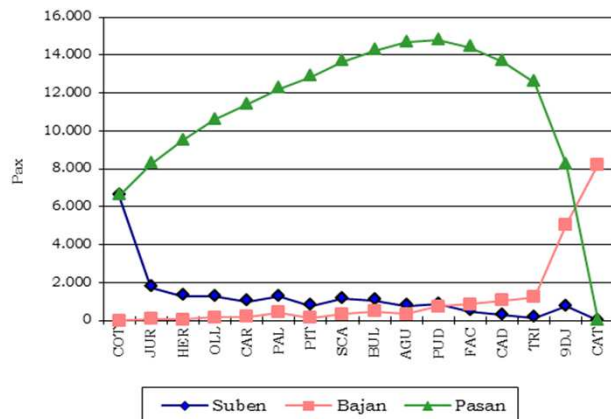
a Catedral	Suben	Bajan	Pasan	Dist. a prox. est.	Dist. total Km
Estación					
COT	6.570	0	6.570	0,680	4.468
JUR	1.756	78	8.248	0,620	5.114
HER	1.291	48	9.492	0,800	7.593
OLL	1.263	170	10.584	0,850	8.997
CAR	999	196	11.387	1,260	14.347
PAL	1.273	434	12.226	0,548	6.700
PIT	764	145	12.845	0,609	7.822
SCA	1.151	331	13.664	0,538	7.351
BUL	1.054	487	14.232	0,552	7.856
AGU	779	331	14.680	0,516	7.575
PUD	853	753	14.779	0,879	12.991
FAC	491	862	14.408	0,494	7.117
CAD	294	1.053	13.648	0,788	10.755
TRI	152	1.247	12.554	0,493	6.189
9DJ	742	5.067	8.229	0,663	5.456
CAT	0	8.229	0	0,000	0

Distancia media por pasajero (Km)	6,19
% sobre longitud de la línea	60,18%
Factor de renovación	1,31
STMC HP PAGOS	5,04%

De 18 a 19 hs.

a Cong. de T.	Suben	Bajan	Pasan	Dist. a prox. est.	Dist. total Km
Estación					
CAT	9.636	0	9.636	0,663	6.389
9DJ	5.934	869	14.701	0,493	7.248
TRI	1.460	178	15.982	0,788	12.594
CAD	1.233	344	16.872	0,494	8.335
FAC	1.010	575	17.307	0,879	15.213
PUD	882	999	17.190	0,516	8.870
AGU	388	913	16.666	0,552	9.200
BUL	570	1.234	16.002	0,538	8.609
SCA	388	1.348	15.042	0,609	9.160
PIT	170	894	14.317	0,548	7.846
PAL	508	1.491	13.335	1,260	16.801
CAR	230	1.170	12.395	0,850	10.535
OLL	199	1.479	11.115	0,800	8.892
HER	56	1.512	9.659	0,620	5.989
JUR	91	2.056	7.694	0,680	5.232
COT	0	7.694	0	0,000	0

Distancia media por pasajero (Km)	6,19
% sobre longitud de la línea	60,18%
Factor de renovación	1,31
STMC HP PAGOS	5,91%



LÍNEA E



COMPOSICIÓN DE PASAJEROS POR ESTACIÓN

ESTACION	Sentido: a Bolivar				Sentido: a Virreyes				Sentido: Ambos				
	Directos	Franquiados + Pases pagos	Comb	Totales	Directos	Franquiados + Pases pagos	Comb	Totales	Directos	Franquiados + Pases pagos	Comb	Totales	%
BOL	0	0		0	14.653	972	8.718	24.343	14.653	972	8.718	24.343	22,36%
BEL	799	42		841	2.476	155		2.630	3.275	196		3.471	3,19%
INE	2.354	161	3.405	5.919	3.014	154	13.027	16.194	5.368	314	16.431	22.113	20,31%
SJO	1.132	84		1.216	1.119	68		1.187	2.252	152		2.403	2,21%
ERI	2.371	170		2.541	2.268	193		2.461	4.638	363		5.002	4,59%
PCH	788	118		906	550	76		626	1.338	194		1.532	1,41%
JUJ	1.919	172	3.413	5.504	741	68	3.274	4.082	2.659	239	6.687	9.586	8,80%
URQ	2.046	222		2.269	472	51		523	2.518	273		2.791	2,56%
BOE	3.932	239		4.171	846	49		895	4.778	288		5.066	4,65%
ALP	4.343	283		4.626	448	31		480	4.792	314		5.106	4,69%
JMM	3.889	199		4.088	378	23		401	4.267	222		4.489	4,12%
EMI	2.849	214		3.063	213	14		227	3.062	227		3.290	3,02%
MMI	1.795	115		1.910	241	14		255	2.036	129		2.165	1,99%
VAR	2.309	116		2.425	642	25		667	2.951	141		3.092	2,84%
VIR	10.443	497	3.479	14.419	0	0		0	10.443	497	3.479	14.419	13,24%
TOTAL	40.968	2.632	10.297	53.897	28.061	1.891	25.018	54.970	69.029	4.523	35.315	108.867	100,00%
%	37,63%	2,42%	9,46%	49,51%	25,78%	1,74%	22,98%	50,49%	63,41%	4,15%	32,44%	100,00%	

COMPOSICIÓN DE PASAJEROS POR BANDA HORARIA

HORA	<i>Sentido: a Bolivar</i>				<i>Sentido: a Virreyes</i>				<i>Sentido: Ambos</i>				
	<i>Directos</i>	<i>Franquiciados + Pases pagos</i>	<i>Comb</i>	<i>Totales</i>	<i>Directos</i>	<i>Franquiciados + Pases pagos</i>	<i>Comb</i>	<i>Totales</i>	<i>Directos</i>	<i>Franquiciados + Pases pagos</i>	<i>Comb</i>	<i>Totales</i>	<i>%</i>
5 a 6	275	37	32	344	84	17	112	213	359	54	145	557	0,51%
6 a 7	1.396	106	311	1.814	241	28	375	644	1.637	134	687	2.458	2,26%
7 a 8	4.554	314	571	5.439	857	76	929	1.863	5.411	390	1.500	7.302	6,71%
8 a 9	7.043	241	729	8.014	1.330	104	1.402	2.836	8.373	345	2.131	10.850	9,97%
9 a 10	4.989	143	595	5.726	871	62	1.492	2.425	5.860	205	2.086	8.151	7,49%
10 a 11	2.831	235	477	3.543	903	108	1.348	2.359	3.734	343	1.825	5.902	5,42%
11 a 12	2.413	215	390	3.017	1.334	130	1.275	2.739	3.747	345	1.664	5.757	5,29%
12 a 13	2.392	278	413	3.083	1.464	197	1.253	2.914	3.856	475	1.666	5.997	5,51%
13 a 14	2.515	232	404	3.152	1.524	162	1.346	3.031	4.039	394	1.750	6.183	5,68%
14 a 15	1.933	191	999	3.123	1.425	131	1.724	3.280	3.357	322	2.723	6.403	5,88%
15 a 16	1.644	183	824	2.652	1.814	150	1.699	3.663	3.458	333	2.524	6.315	5,80%
16 a 17	1.807	98	971	2.875	2.395	126	1.994	4.515	4.201	224	2.965	7.391	6,79%
17 a 18	2.352	112	958	3.422	3.924	183	2.541	6.649	6.276	296	3.499	10.071	9,25%
18 a 19	2.105	106	1.042	3.253	4.193	170	2.913	7.276	6.298	276	3.955	10.529	9,67%
19 a 20	1.136	56	743	1.935	2.430	97	1.934	4.461	3.566	153	2.676	6.396	5,87%
20 a 21	807	34	484	1.325	1.698	59	1.439	3.196	2.505	93	1.923	4.521	4,15%
21 a 22	552	29	241	823	1.040	64	887	1.991	1.593	93	1.128	2.814	2,58%
22 a 23	224	20	112	356	533	27	355	915	757	47	467	1.271	1,17%
TOTAL	40.968	2.632	10.297	53.897	28.061	1.891	25.018	54.970	69.029	4.523	35.315	108.867	100,00%
%	37,63%	2,42%	9,46%	49,51%	25,78%	1,74%	22,98%	50,49%	63,41%	4,15%	32,44%	100,00%	

PASAJEROS TOTALES
SENTIDO: BOLIVAR

<i>Sentido: a Bolivar</i>																	
HORA	BOL	BEL	INE	SJO	ERI	PCH	JUJ	URQ	BOE	ALP	JMM	EMI	MMI	VAR	VIR	TOTAL	%
5 a 6	0	3	29	5	14	6	29	12	13	22	22	13	14	24	139	344	0,64%
6 a 7	0	3	135	29	92	18	155	51	55	119	99	58	52	90	858	1.814	3,36%
7 a 8	0	14	312	85	260	79	347	200	339	475	457	315	229	263	2.062	5.439	10,09%
8 a 9	0	17	411	120	374	115	497	290	625	783	831	597	348	391	2.615	8.014	14,87%
9 a 10	0	10	362	124	324	105	395	280	517	653	627	175	275	354	1.526	5.726	10,62%
10 a 11	0	8	320	90	183	93	310	195	347	358	317	129	138	195	861	3.543	6,57%
11 a 12	0	25	446	88	106	53	270	154	279	265	207	225	100	164	636	3.017	5,60%
12 a 13	0	13	308	106	79	69	283	157	302	345	210	213	106	142	751	3.083	5,72%
13 a 14	0	16	384	134	117	69	284	150	256	297	229	235	116	134	732	3.152	5,85%
14 a 15	0	81	421	76	175	63	447	178	238	194	179	149	91	104	726	3.123	5,79%
15 a 16	0	71	347	74	180	55	378	142	200	179	155	137	66	85	582	2.652	4,92%
16 a 17	0	63	466	58	169	27	452	124	183	198	154	165	74	109	633	2.875	5,34%
17 a 18	0	174	496	73	192	38	502	87	264	235	226	192	102	140	701	3.422	6,35%
18 a 19	0	231	529	52	145	59	485	66	263	219	200	151	89	91	673	3.253	6,04%
19 a 20	0	54	383	38	68	24	301	64	131	135	81	104	55	62	436	1.935	3,59%
20 a 21	0	24	237	36	39	13	210	39	98	93	62	101	24	53	296	1.325	2,46%
21 a 22	0	22	166	20	14	14	111	68	54	50	31	83	26	21	142	823	1,53%
22 a 23	0	13	168	8	8	5	49	12	8	5	1	19	5	4	51	356	0,66%
Total	0	841	5.919	1.216	2.541	906	5.504	2.269	4.171	4.626	4.088	3.063	1.910	2.425	14.419	53.897	100,00%
%	0,00%	1,56%	10,98%	2,26%	4,71%	1,68%	10,21%	4,21%	7,74%	8,58%	7,58%	5,68%	3,54%	4,50%	26,75%	100,00%	

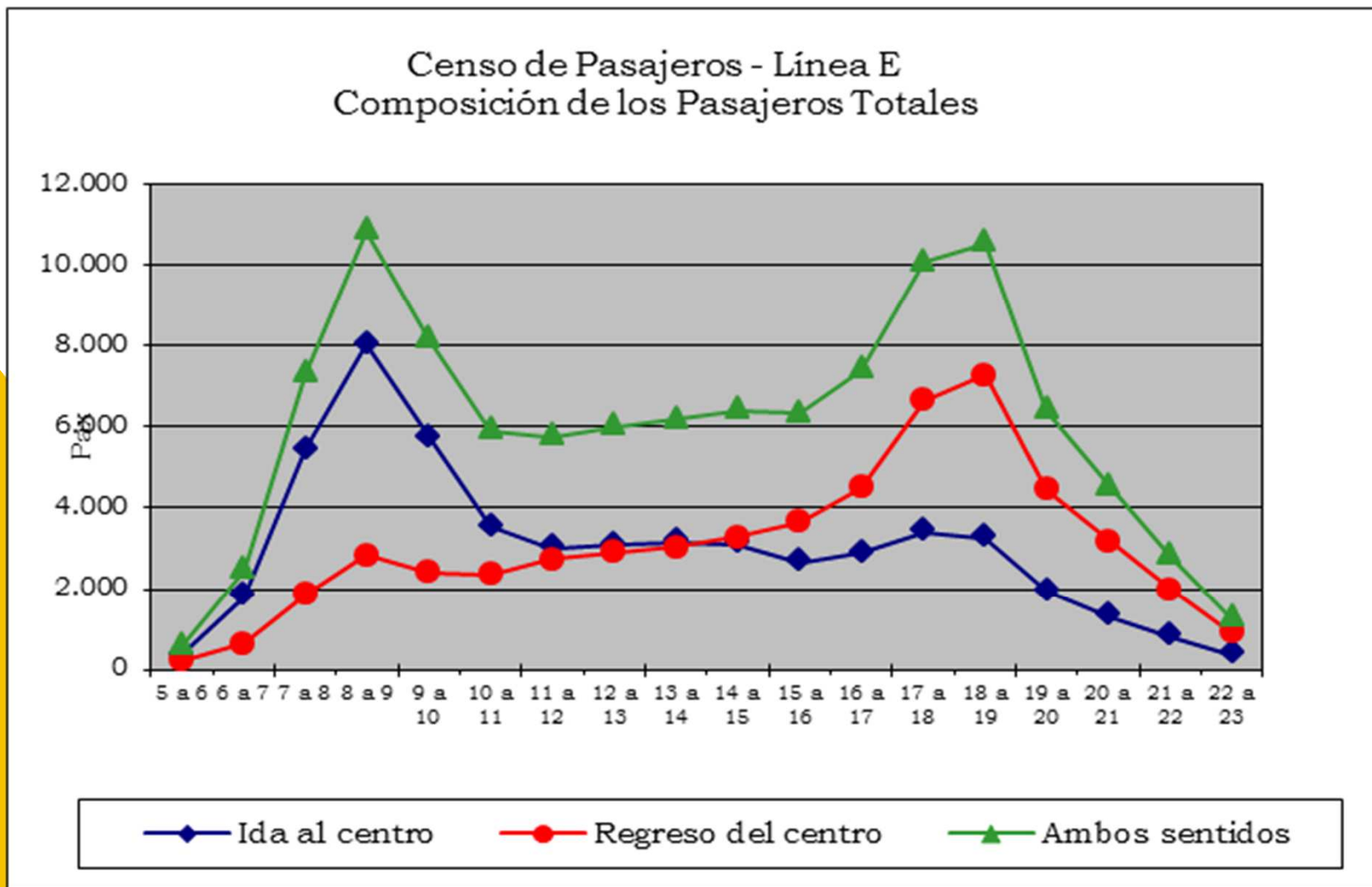
PASAJEROS TOTALES
SENTIDO: PLAZA DE LOS VIRREYES

<i>Sentido: a Virreyes</i>																	
HORA	BOL	BEL	INE	SJO	ERI	PCH	JUU	URQ	BOE	ALP	JMM	EMI	MMI	VAR	VIR	TOTAL	%
5 a 6	60	8	68	5	38	6	20	1	5	0	1	1	0	0	0	213	0,39%
6 a 7	187	8	227	18	34	8	65	8	47	12	5	4	4	16	0	644	1,17%
7 a 8	493	51	574	61	145	57	147	21	34	23	15	24	49	171	0	1.863	3,39%
8 a 9	757	41	887	69	176	39	214	47	50	26	38	55	99	337	0	2.836	5,16%
9 a 10	724	50	928	60	171	31	234	14	66	20	10	5	17	96	0	2.425	4,41%
10 a 11	790	76	810	59	214	38	233	25	51	16	23	3	10	10	0	2.359	4,29%
11 a 12	923	92	1.025	66	215	28	215	34	95	19	17	3	4	4	0	2.739	4,98%
12 a 13	1.081	170	836	62	277	37	209	38	107	42	29	10	10	5	0	2.914	5,30%
13 a 14	1.221	146	931	47	262	43	215	34	58	32	16	5	18	3	0	3.031	5,51%
14 a 15	1.455	134	1.029	58	132	38	294	17	50	27	34	7	6	1	0	3.280	5,97%
15 a 16	1.764	229	1.019	77	113	46	283	20	42	23	20	19	2	7	0	3.663	6,66%
16 a 17	2.252	292	1.173	71	121	46	313	71	61	39	36	31	9	1	0	4.515	8,21%
17 a 18	3.749	408	1.533	106	120	64	421	70	52	56	43	25	4	0	0	6.649	12,10%
18 a 19	4.035	447	1.777	123	147	57	464	48	41	75	38	16	6	2	0	7.276	13,24%
19 a 20	2.370	192	1.161	119	118	29	326	20	51	31	32	10	1	0	0	4.461	8,11%
20 a 21	1.535	131	953	88	91	29	230	22	53	20	29	6	7	2	0	3.196	5,81%
21 a 22	727	136	691	86	82	25	146	31	32	10	10	0	6	9	0	1.991	3,62%
22 a 23	220	19	572	12	6	6	54	2	1	9	5	5	3	2	0	915	1,66%
Total	24.343	2.630	16.194	1.187	2.461	626	4.082	523	895	480	401	227	255	667	0	54.970	100,00%
%	44,28%	4,78%	29,46%	2,16%	4,48%	1,14%	7,43%	0,95%	1,63%	0,87%	0,73%	0,41%	0,46%	1,21%	0,00%	100,00%	

PASAJEROS TOTALES
AMBOS SENTIDOS

<i>Ambos sentidos</i>																	
HORA	BOL	BEL	INE	SJO	ERI	PCH	JUJ	URQ	BOE	ALP	JMM	EMI	MMI	VAR	VIR	TOTAL	%
5 a 6	60	11	97	10	52	12	48	13	18	22	23	14	14	24	139	557	0,51%
6 a 7	187	11	362	47	126	26	220	59	102	131	104	62	56	106	858	2.458	2,26%
7 a 8	493	65	886	146	405	136	494	221	373	498	472	339	278	434	2.062	7.302	6,71%
8 a 9	757	58	1.298	189	550	154	711	337	674	809	869	652	447	728	2.615	10.850	9,97%
9 a 10	724	60	1.289	184	495	136	628	294	583	673	637	180	292	450	1.526	8.151	7,49%
10 a 11	790	84	1.131	149	397	131	542	220	398	374	340	132	148	205	861	5.902	5,42%
11 a 12	923	117	1.470	154	321	81	485	188	373	284	224	228	104	168	636	5.757	5,29%
12 a 13	1.081	183	1.143	168	356	106	492	195	410	387	239	223	116	147	751	5.997	5,51%
13 a 14	1.221	162	1.315	181	379	112	499	184	314	329	245	240	134	137	732	6.183	5,68%
14 a 15	1.455	215	1.450	134	307	101	741	195	288	221	213	156	97	105	726	6.403	5,88%
15 a 16	1.764	300	1.366	151	293	101	661	162	241	202	175	156	68	92	582	6.315	5,80%
16 a 17	2.252	355	1.639	129	290	73	765	195	244	237	190	196	83	110	633	7.391	6,79%
17 a 18	3.749	582	2.029	179	312	102	923	157	315	291	269	217	106	140	701	10.071	9,25%
18 a 19	4.035	678	2.306	175	292	116	949	114	304	294	238	167	95	93	673	10.529	9,67%
19 a 20	2.370	246	1.544	157	186	53	627	84	182	166	113	114	56	62	436	6.396	5,87%
20 a 21	1.535	155	1.190	124	130	42	440	61	151	113	91	107	31	55	296	4.521	4,15%
21 a 22	727	158	857	106	96	39	257	99	86	60	41	83	32	30	142	2.814	2,58%
22 a 23	220	31	740	20	15	11	103	13	9	15	6	24	8	6	51	1.271	1,17%
Total	24.343	3.471	22.113	2.403	5.002	1.532	9.586	2.791	5.066	5.106	4.489	3.290	2.165	3.092	14.419	108.867	100,00%
%	22,36%	3,19%	20,31%	2,21%	4,59%	1,41%	8,80%	2,56%	4,65%	4,69%	4,12%	3,02%	1,99%	2,84%	13,24%	100,00%	

COMPOSICIÓN DE PASAJEROS TOTALES



COMPOSICIÓN DE PASAJEROS EN HORA PICO

Línea E
De 8 a 9 hs.

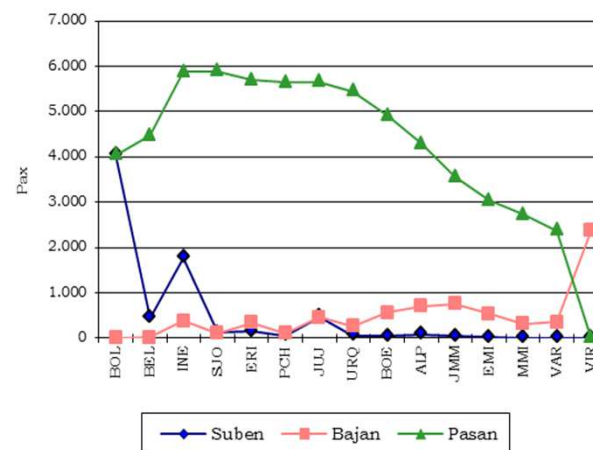
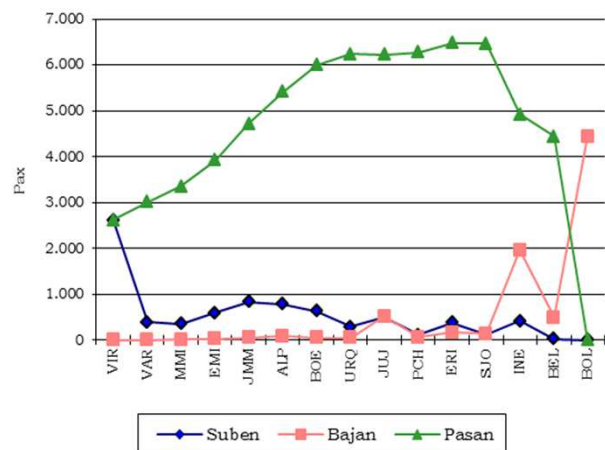
a Bolívar	Suben	Bajan	Pasan	Dist. a prox. est.	Dist. total Km
VIR	2.615	0	2.615	0,491	1.284
VAR	391	3	3.004	0,788	2.367
MMI	348	7	3.345	0,972	3.251
EMI	597	17	3.925	0,850	3.336
JMM	831	41	4.715	0,810	3.819
ALP	783	83	5.415	0,834	4.516
BOE	625	45	5.994	0,650	3.896
URQ	290	52	6.231	0,625	3.895
JUJ	497	511	6.217	0,527	3.276
PCH	115	63	6.269	0,525	3.291
ERI	374	162	6.482	0,582	3.772
SJO	120	136	6.466	0,763	4.933
INE	411	1.957	4.920	0,606	2.981
BEL	17	492	4.445	0,519	2.307
BOL	0	4.445	0	0,000	0

Distancia media por pasajero (Km)	5,86
% sobre longitud de la línea	61,37%
Factor de renovación	1,24
STMC HP PAGOS	9,39%

De 18 a 19 hs.

a Virreyes	Suben	Bajan	Pasan	Dist. a prox. est.	Dist. total Km
BOL	4.035	0	4.035	0,519	2.094
BEL	447	16	4.466	0,606	2.707
INE	1.777	373	5.870	0,763	4.479
SJO	123	109	5.885	0,582	3.425
ERI	147	340	5.692	0,525	2.988
PCH	57	104	5.645	0,527	2.975
JUJ	464	451	5.657	0,625	3.536
URQ	48	263	5.442	0,650	3.537
BOE	41	567	4.916	0,834	4.100
ALP	75	711	4.280	0,810	3.467
JMM	38	755	3.563	0,850	3.029
EMI	16	542	3.037	0,972	2.952
MMI	6	316	2.728	0,788	2.149
VAR	2	355	2.375	0,491	1.166
VIR	0	2.375	0	0,000	0

Distancia media por pasajero (Km)	5,86
% sobre longitud de la línea	61,37%
Factor de renovación	1,24
STMC HP PAGOS	8,53%



LÍNEA H





COMPOSICIÓN DE PASAJEROS POR ESTACIÓN

ESTACION	Sentido: a Corrientes				Sentido: a Hospitales				Sentido: Ambos				
	Directos	Franquiados + Pases pagos	Comb	Totales	Directos	Franquiados + Pases pagos	Comb	Totales	Directos	Franquiados + Pases pagos	Comb	Totales	%
HOS	2.838	181		3.019	0	0		0	2.838	181		3.019	5,24%
PAT	3.364	172		3.537	54	3		56	3.418	175		3.593	6,23%
CAS	3.608	232		3.840	49	3		52	3.657	235		3.892	6,75%
ICL	2.257	185		2.443	128	11		138	2.385	196		2.581	4,48%
HUM	1.252	131	5.504	6.888	1.353	136	884	2.373	2.605	267	6.389	9.261	16,07%
VEN	2.340	214		2.555	676	63		738	3.016	277		3.293	5,71%
ONC	2.162	182	2.488	4.832	1.754	128	3.717	5.599	3.916	310	6.205	10.431	18,10%
COR	0	0		0	3.761	332	17.465	21.558	3.761	332	17.465	21.558	37,41%
TOTAL	17.822	1.298	7.993	27.112	7.774	675	22.066	30.515	25.596	1.973	30.059	57.628	100,00%
%	30,93%	2,25%	13,87%	47,05%	13,49%	1,17%	38,29%	52,95%	44,42%	3,42%	52,16%	100,00%	

COMPOSICIÓN DE PASAJEROS POR BANDA HORARIA

HORA	<i>Sentido: a Corrientes</i>				<i>Sentido: a Hospitales</i>				<i>Sentido: Ambos</i>				
	<i>Directos</i>	<i>Franquiciados + Pases pagos</i>	<i>Comb</i>	<i>Totales</i>	<i>Directos</i>	<i>Franquiciados + Pases pagos</i>	<i>Comb</i>	<i>Totales</i>	<i>Directos</i>	<i>Franquiciados + Pases pagos</i>	<i>Comb</i>	<i>Totales</i>	<i>%</i>
5 a 6	103	12	20	135	14	5	53	73	117	17	73	207	0,36%
6 a 7	401	36	126	564	70	7	214	290	471	43	340	854	1,48%
7 a 8	1.426	114	370	1.910	283	17	1.056	1.356	1.709	131	1.425	3.265	5,67%
8 a 9	2.160	85	547	2.792	452	25	1.155	1.632	2.612	110	1.702	4.424	7,68%
9 a 10	1.524	71	762	2.358	426	26	1.010	1.462	1.950	97	1.773	3.820	6,63%
10 a 11	1.054	95	561	1.710	351	43	741	1.135	1.405	138	1.302	2.845	4,94%
11 a 12	1.015	109	536	1.660	360	43	1.058	1.461	1.375	152	1.594	3.121	5,42%
12 a 13	1.243	140	492	1.875	446	68	879	1.393	1.689	208	1.371	3.268	5,67%
13 a 14	1.218	125	650	1.993	441	56	1.199	1.696	1.659	181	1.849	3.689	6,40%
14 a 15	1.140	107	614	1.861	462	43	1.416	1.922	1.602	150	2.030	3.782	6,56%
15 a 16	1.043	98	580	1.721	532	58	1.560	2.150	1.575	156	2.140	3.871	6,72%
16 a 17	1.028	75	553	1.656	672	53	1.680	2.405	1.700	128	2.233	4.061	7,05%
17 a 18	1.319	68	634	2.022	880	70	2.564	3.513	2.199	138	3.198	5.535	9,61%
18 a 19	1.372	71	582	2.025	972	51	3.277	4.300	2.344	122	3.859	6.325	10,97%
19 a 20	689	42	446	1.177	706	50	1.678	2.434	1.395	92	2.124	3.611	6,27%
20 a 21	745	26	274	1.045	403	25	1.287	1.715	1.148	51	1.561	2.760	4,79%
21 a 22	252	10	186	448	217	19	971	1.207	469	29	1.157	1.655	2,87%
22 a 23	90	12	60	162	87	18	267	372	177	30	327	534	0,93%
TOTAL	17.822	1.298	7.993	27.112	7.774	675	22.066	30.515	25.596	1.973	30.059	57.628	100,00%
%	30,93%	2,25%	13,87%	47,05%	13,49%	1,17%	38,29%	52,95%	44,42%	3,42%	52,16%	100,00%	

PASAJEROS TOTALES
SENTIDO: CORRIENTES

<i>Sentido: a Corrientes</i>										
HORA	HOS	PAT	CAS	ICL	HUM	VEN	ONC	COR	TOTAL	%
5 a 6	11	17	20	21	30	18	18	0	135	0,50%
6 a 7	101	83	80	41	123	52	85	0	564	2,08%
7 a 8	397	380	276	231	334	143	149	0	1.910	7,04%
8 a 9	580	548	351	305	524	245	239	0	2.792	10,30%
9 a 10	324	336	216	222	664	233	363	0	2.358	8,70%
10 a 11	183	243	163	144	490	170	317	0	1.710	6,31%
11 a 12	174	176	160	128	476	202	345	0	1.660	6,12%
12 a 13	190	227	240	156	451	228	384	0	1.875	6,92%
13 a 14	191	223	251	167	558	177	426	0	1.993	7,35%
14 a 15	177	195	301	157	517	121	392	0	1.861	6,86%
15 a 16	143	195	219	155	473	140	396	0	1.721	6,35%
16 a 17	134	179	202	166	481	150	344	0	1.656	6,11%
17 a 18	154	230	284	208	522	196	429	0	2.022	7,46%
18 a 19	107	250	444	145	471	196	411	0	2.025	7,47%
19 a 20	70	99	200	83	329	155	240	0	1.177	4,34%
20 a 21	49	93	370	69	234	52	178	0	1.045	3,85%
21 a 22	30	53	34	27	157	58	90	0	448	1,65%
22 a 23	4	11	29	18	54	20	25	0	162	0,60%
Total	3.019	3.537	3.840	2.443	6.888	2.555	4.832	0	27.112	100,00%
%	11,14%	13,04%	14,16%	9,01%	25,41%	9,42%	17,82%	0,00%	100,00%	

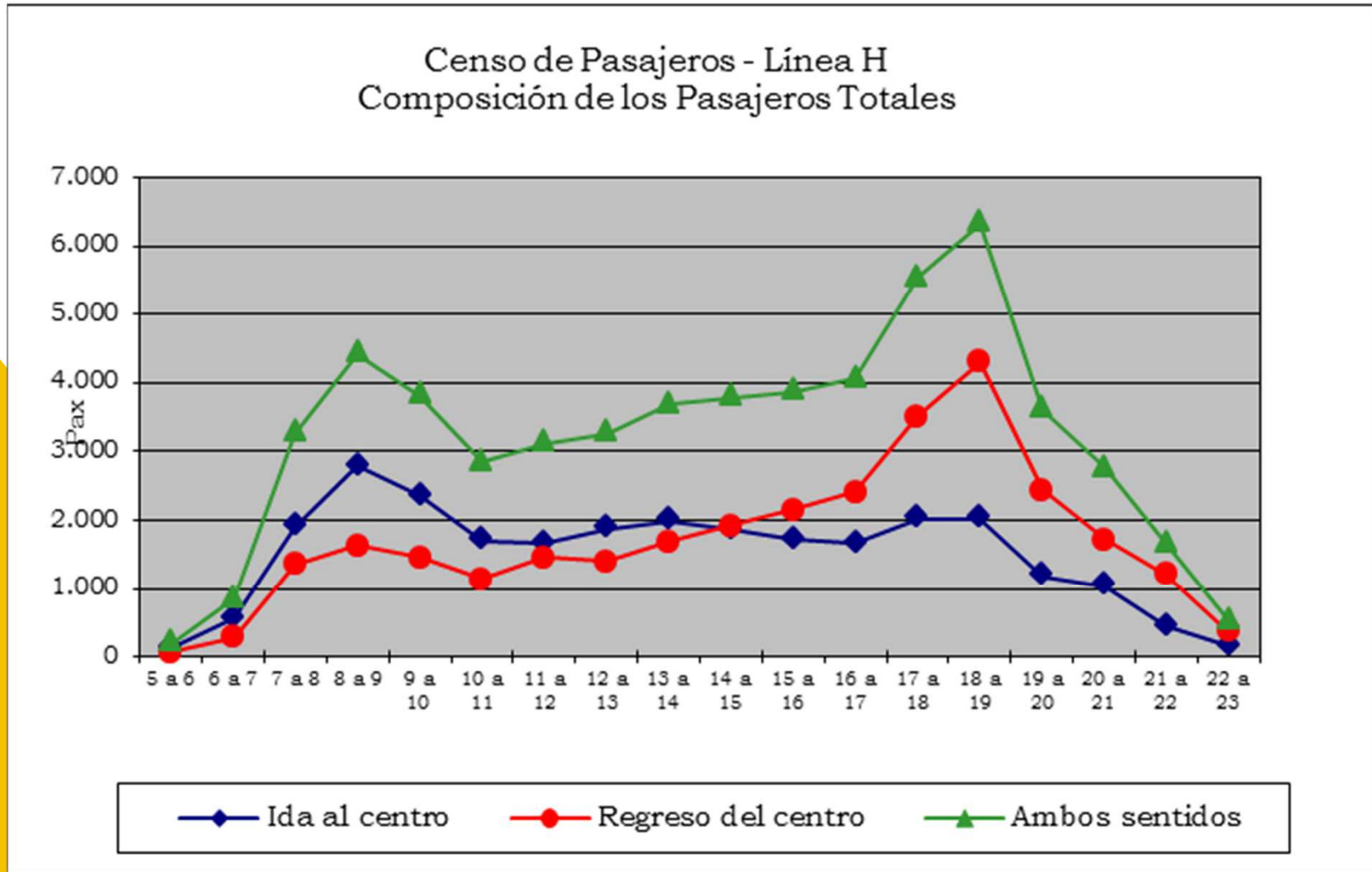
PASAJEROS TOTALES
SENTIDO: HOSPITALES

<i>Sentido: a Hospitales</i>										
HORA	HOS	PAT	CAS	ICL	HUM	VEN	ONC	COR	TOTAL	%
5 a 6	0	0	0	1	2	3	19	48	73	0,24%
6 a 7	0	1	0	2	22	7	64	194	290	0,95%
7 a 8	0	1	0	2	94	30	298	930	1.356	4,44%
8 a 9	0	4	4	12	123	53	357	1.077	1.632	5,35%
9 a 10	0	2	4	8	99	38	378	932	1.462	4,79%
10 a 11	0	4	1	9	94	42	234	750	1.135	3,72%
11 a 12	0	4	8	10	104	41	269	1.024	1.461	4,79%
12 a 13	0	2	7	10	135	65	250	924	1.393	4,56%
13 a 14	0	4	5	18	128	44	284	1.214	1.696	5,56%
14 a 15	0	3	1	9	166	44	331	1.367	1.922	6,30%
15 a 16	0	3	1	6	201	34	371	1.534	2.150	7,05%
16 a 17	0	3	11	6	196	58	430	1.702	2.405	7,88%
17 a 18	0	2	2	10	272	66	630	2.530	3.513	11,51%
18 a 19	0	9	1	12	291	45	734	3.209	4.300	14,09%
19 a 20	0	3	0	15	195	64	394	1.763	2.434	7,98%
20 a 21	0	9	5	6	122	64	293	1.216	1.715	5,62%
21 a 22	0	1	2	2	97	20	199	886	1.207	3,95%
22 a 23	0	0	0	1	31	20	62	258	372	1,22%
Total	0	56	52	138	2.373	738	5.599	21.558	30.515	100,00%
%	0,00%	0,18%	0,17%	0,45%	7,77%	2,42%	18,35%	70,65%	100,00%	

PASAJEROS TOTALES
AMBOS SENTIDOS

<i>Ambos sentidos</i>										
HORA	HOS	PAT	CAS	ICL	HUM	VEN	ONC	COR	TOTAL	%
5 a 6	11	17	20	22	32	20	37	48	207	0,36%
6 a 7	101	84	80	43	144	59	149	194	854	1,48%
7 a 8	397	381	276	233	428	173	448	930	3.265	5,67%
8 a 9	580	552	355	317	648	298	597	1.077	4.424	7,68%
9 a 10	324	338	220	230	764	271	742	932	3.820	6,63%
10 a 11	183	247	164	153	584	212	551	750	2.845	4,94%
11 a 12	174	180	168	138	579	243	614	1.024	3.121	5,42%
12 a 13	190	229	247	166	585	293	634	924	3.268	5,67%
13 a 14	191	227	256	185	686	221	709	1.214	3.689	6,40%
14 a 15	177	198	302	166	684	165	724	1.367	3.782	6,56%
15 a 16	143	198	220	161	674	174	767	1.534	3.871	6,72%
16 a 17	134	182	213	172	677	208	773	1.702	4.061	7,05%
17 a 18	154	232	286	218	795	262	1.058	2.530	5.535	9,61%
18 a 19	107	259	445	157	762	241	1.145	3.209	6.325	10,97%
19 a 20	70	102	200	98	524	219	635	1.763	3.611	6,27%
20 a 21	49	102	375	75	357	116	471	1.216	2.760	4,79%
21 a 22	30	54	36	28	254	78	288	886	1.655	2,87%
22 a 23	4	11	29	19	85	40	88	258	534	0,93%
Total	3.019	3.593	3.892	2.581	9.261	3.293	10.431	21.558	57.628	100,00%
%	5,24%	6,23%	6,75%	4,48%	16,07%	5,71%	18,10%	37,41%	100,00%	

COMPOSICIÓN DE PASAJEROS TOTALES



COMPOSICIÓN DE PASAJEROS EN HORA PICO

Línea H
De 8 a 9 hs.

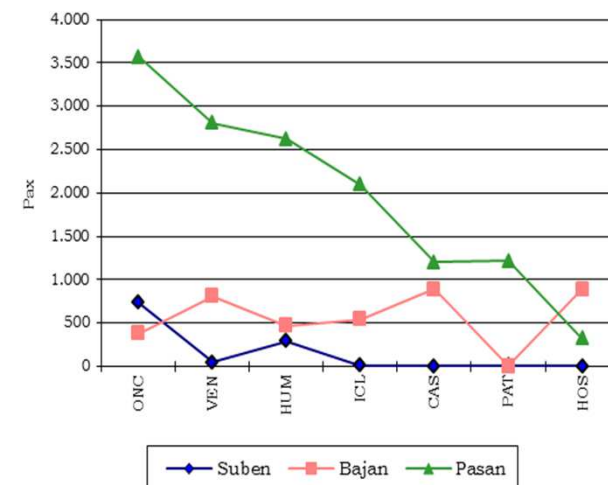
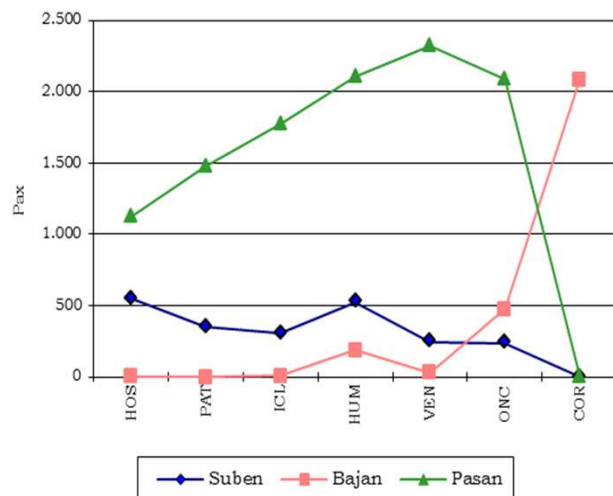
a Corrientes	Suben	Bajan	Pasan	Dist. a prox. est.	Dist. total Km
Estación					
HOS	580	0	580	0,800	464
HOS	548	6	1.122	0,875	982
PAT	351	0	1.472	0,680	1.001
ICL	305	8	1.769	0,712	1.260
HUM	524	189	2.104	0,895	1.884
VEN	245	29	2.320	0,710	1.647
ONC	239	477	2.083	0,578	1.204
COR	0	2.083	0	0,000	0

Distancia media por pasajero (Km)	3,02
% sobre longitud de la línea	57,60%
Factor de renovación	1,20
STMC HP PAGOS	9,06%

De 18 a 19 hs.

a Caseros	Suben	Bajan	Pasan	Dist. a prox. est.	Dist. total Km
Estación					
COR	3.209	369	3.209	0,578	1.855
ONC	734	377	3.566	0,710	2.532
VEN	45	808	2.803	0,895	2.508
HUM	291	469	2.625	0,712	1.869
ICL	12	540	2.096	0,680	1.425
CAS	1	893	1.203	0,875	1.053
PAT	9	0	1.212	0,800	970
HOS	0	893	319	0,000	0

Distancia media por pasajero (Km)	2,81
% sobre longitud de la línea	53,47%
Factor de renovación	1,55
STMC HP PAGOS	13,27%



RANKING DE ESTACIONES POR PASAJEROS TOTALES

Año 2013							Año 1995			
Nro.	Posición 1995	Estación	Código	Suben	Acumulado	% Acum.	Nro.	Estación	Suben	Comparativa en pasajeros
1	5	9 de Julio	9DJ	82.84	82.84	5,9%	1	Constitución	67.442	6,43%
2	1	Constitución	CST	78.524	160.708	11,5%	2	Diagonal Norte	58.297	1,55%
3	4	Carlos Pellegrini	CPE	70.019	230.728	16,5%	3	Federico Lacroze	52.046	-3,37%
4	6	Catedral	CAT	61.262	291.990	20,9%	4	Carlos Pellegrini	49.094	42,62%
5	2	Diagonal Norte	DNO	59.897	351.187	25,2%	5	9 de Julio	40.877	10,05%
6	n/d	Congreso de Tucumán	COT	44.179	395.366	28,4%	6	Catedral	39.825	53,83%
7	8	Retiro	RET	38.874	434.240	31,4%	7	Lima	38.333	-2,18%
8	3	Lacroze	LAC	34.677	468.917	33,6%	8	Retiro	34.100	14,00%
9	19	Leandro N. Alem	ALM	30.140	499.057	35,8%	9	Primerá Junta	27.541	-57,98%
10	7	Lima	LM	29.973	529.030	37,9%	10	Avenida de Mayo	25.974	0,75%
11	22	Pueyrredón B	PUB	29.413	558.443	40,4%	11	Florida	23.314	14,99%
12	11	Florida	FLO	26.790	585.233	42,0%	12	Peru	21.153	-6,48%
13	10	Avenida de Mayo	AVM	26.170	611.403	43,8%	13	Plaza Miserere	21.067	-2,46%
14	n/d	Carabobo	CAR	25.627	637.030	45,7%	14	Independencia C	20.101	-11,09%
15	16	Bolívar	BOL	24.343	661.373	47,4%	15	Palermo	19.961	-8,84%
16	18	Independencia E	INE	22.113	683.486	49,0%	16	Bolívar	19.922	22,89%
17	21	Facultad de Medicina	FAC	21.621	705.107	50,6%	17	Uruguay	19.297	11,06%
18	n/d	Corrientes	COR	21.558	726.665	52,1%	18	Independencia E	18.958	16,64%
19	25	Malabía	MAL	21.310	748.175	53,7%	19	L.N. Alem	18.697	61,20%
20	17	Uruguay	URU	21.132	769.607	55,2%	20	Callao B	17.318	16,37%
21	n/d	Juan Manuel de Rosas	RBS	21.064	790.671	56,7%	21	Fac. de Medicina	16.662	29,76%
22	20	Callao B	CAB	20.147	810.818	58,2%	22	Pueyrredón B	15.925	85,86%
23	12	Perú	PER	19.782	830.600	59,6%	23	Acoyte	15.563	-13,58%
24	26	Tribunales	TRI	18.997	849.597	60,9%	24	Plaza De Mayo	15.072	-2,95%
25	n/d	Turamento	TUR	18.656	868.253	62,3%	25	Malabía	14.818	45,66%
26	13	Plaza Miserere	MIS	18.463	886.716	63,6%	26	Tribunales	14.745	28,84%
27	15	Palermo	PAL	18.195	904.911	64,9%	27	Caranza	14.728	-28,86%
28	29	Medrano	MED	18.137	923.048	66,2%	28	Lavalle	14.417	-17,03%
29	33	Callao D	CAD	18.077	941.125	67,5%	29	Medrano	14.040	29,88%
30	14	Independencia C	INC	17.751	958.876	68,8%	30	Bulnes	13.545	29,06%
31	30	Bulnes	BUL	17.481	976.357	70,0%	31	Pasteur	13.278	10,27%
32	37	Pueyrredón D	PUD	16.112	992.469	71,2%	32	Congreso	13.055	-8,66%
33	47	Carlos Gardel	CGA	15.809	1008.278	72,3%	33	Callao D	12.805	41,17%
34	34	Angel Gallardo	AGA	15.332	1023.610	73,4%	34	Angel Gallardo	12.372	23,92%
35	n/d	Los Incas	LIN	15.218	1038.828	74,5%	35	Saenz Peña	11.717	-24,97%
36	39	Dorrego	DOR	15.029	1053.857	75,6%	36	Scalabrini Ortiz	11.311	22,43%
37	31	Pasteur	PST	14.641	1068.498	76,6%	37	Pueyrredón D	10.237	57,39%
38	24	Plaza de Mayo	PMA	14.629	1083.127	77,7%	38	Plaza Italia	10.173	12,67%
39	40	Vireyes	VR	14.419	1097.546	78,7%	39	Dorrego	9.972	50,79%
40	n/d	Olleross	OLL	14.166	1.111.712	79,7%	40	Vireyes	9.945	44,99%
41	36	Scalabrini Ortiz	SCA	13.630	1.125.342	80,7%	41	Rio De Janeiro	9.736	-26,24%
42	23	Acoyte	ACO	13.449	1.138.791	81,7%	42	Gral. San Martín	9.680	24,89%
43	n/d	José Hernández	JHR	12.746	1.151.537	82,6%	43	Agüero	9.676	24,08%
44	42	San Martín	SMA	12.022	1.163.559	83,4%	44	Castro Barros	8.362	-4,29%
45	43	Agüero	AGU	12.006	1.175.565	84,3%	45	Piedras	8.023	6,20%
46	32	Congreso	CNG	11.925	1.187.490	85,2%	46	Loria	7.030	-3,12%
47	28	Lavalle	LAV	11.833	1.199.322	86,0%	47	Carlos Gardel	6.311	150,30%
48	9	Primerá Junta	PJU	11.573	1.210.895	86,8%	48	Mariano Moreno	5.896	45,02%
49	38	Plaza Italia	PII	11.462	1.222.357	87,7%	49	Avenida La Plata	4.651	9,78%
50	27	Caranza	CAR	10.580	1.232.937	88,4%	50	Pasco	4.555	-23,78%
51	n/d	Once	ONC	10.431	1.243.368	89,2%	51	San Juan	4.364	51,37%
52	58	Jujuy	JUJ	9.586	1.252.954	89,9%	52	Boedo	4.180	21,89%
53	n/d	Humberto I°	HUM	9.261	1.262.215	90,5%	53	Entre Ríos	4.074	22,78%
54	35	Saenz Peña	SPE	8.791	1.271.006	91,2%	54	Alberdi	3.646	-12,67%
55	48	Moreno	MOR	8.551	1.279.557	91,8%	55	Urquiza	3.456	-10,23%
56	45	Piedras	PPI	8.039	1.287.596	92,3%	56	J.M. Moreno	3.431	-19,83%
57	44	Castro Barros	CBR	8.010	1.295.606	92,9%	57	E. Mitre	3.395	-3,11%
58	41	Rio de Janeiro	RDJ	7.181	1.302.787	93,4%	58	Jujuy	3.048	214,49%
59	n/d	Tromador	TRO	6.711	1.309.498	93,9%	59	Belgrano	2.726	27,34%
60	51	San Juan	SJU	6.604	1.316.102	94,4%	60	Pichincha	2.642	-42,02%
61	n/d	Echeverría	ECH	6.085	1.322.187	94,8%	61	Varela	2.601	18,88%
62	n/d	Puan	PUA	6.027	1.328.214	95,3%	62	M. Mitrogora	2.298	-5,79%
63	49	Avenida La Plata	ALP	5.106	1.333.319	95,6%	63	San José	1.831	312,66%
64	52	Boedo	BOE	5.066	1.338.385	96,0%				
65	53	Entre Ríos	ERI	5.002	1.343.387	96,3%				
66	46	Loria	LOR	4.702	1.348.089	96,7%				
67	56	José María Moreno	JMM	4.489	1.352.578	97,0%				
68	n/d	Caseros	CAN	3.892	1.356.470	97,3%				
69	n/d	Parque Patricios	PAT	3.593	1.360.063	97,5%				
70	50	Pasco	PAN	3.472	1.363.535	97,8%				
71	59	Belgrano	BEL	3.471	1.367.006	98,0%				
72	n/d	Venezuela	VEN	3.293	1.370.299	98,3%				
73	57	Emilio Mitre	EMI	3.290	1.373.589	98,5%				
74	54	Alberdi	ALB	3.158	1.376.747	98,7%				
75	61	Varela	VAR	3.092	1.379.839	99,0%				
76	n/d	Hospitales	HOS	3.019	1.382.858	99,2%				
77	55	Urquiza	URQ	2.791	1.385.649	99,4%				
78	n/d	Inclán	INL	2.581	1.388.230	99,6%				
79	63	San José	SJO	2.493	1.390.723	99,7%				
80	62	Medalla Mitrogora	MMI	2.165	1.392.798	99,9%				
81	60	Pichincha	PCH	1.532	1.394.330	100,0%				